

WASTE LESS



A guide to help you
waste less and
recycle more



www.lichfielddc.gov.uk/wasteless

Lichfield
district council
www.lichfielddc.gov.uk

WASTE LESS

Your guide to recycling in Lichfield District

We have put this guide together to help you waste less and recycle more. It tells you how to recycle and what to put in which colour bins.

Not only is recycling better for the environment, it also costs less money than sending waste to landfill or to be incinerated, so it's win win!

We also have a section on how to reduce the amount of waste produced in the first place with our 'Use Less' tips.

Thank you for helping us to waste less and recycle more.



Questions to ask yourself before you recycle

Can the item be recycled?

Check the blue bin item list on the next page if you're unsure or visit www.lichfielddc.gov.uk/bins.

Is it dirty?

Please rinse out all dirty containers. We can't recycle any dirty items and they can contaminate other recycling.

Do I need to bag it?

No, we prefer your recycling to be loose in the bin and it means fewer plastic bags are used. If you want to bag your recycling, please do not use black bin liners – only use clear bags.

Does the lid close?

If your bin is full, please put any extra recycling in clear, tied bags and place them to the side of your blue bin on your collection day. If you regularly fill up your bin, order a second blue bin for free at www.lichfielddc.gov.uk/extrabluebin.

When do I put my bin out?

Check and keep your bin calendar that we send out to all homes in early winter or visit www.lichfielddc.gov.uk/bincalendar. Please make sure your bin is out by 6.30am on your bin day.

How do I know that my recycling isn't ending up in landfill?

We collect mixed recycling in your blue bins. The items are separated at a sorting plant and then taken off to be recycled. We can track where all your recycling goes, to make sure it is being turned into new products. At least 85% of items you put in your blue bin are turned into something new.





Please put these items in your blue bin



Plastic bottles



Glass bottles & jars



Food & drink cans



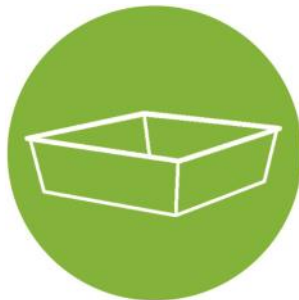
Waxed cartons,
Including juice, soup
& milk cartons



Cardboard, including
boxes, toilet roll
inners, food sleeves



Paper, including
magazines, wrapping
paper, directories



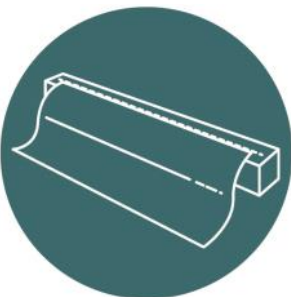
Plastic food trays
& tubs



Aerosols



Roll-ons



Aluminium foil
& trays



Plastic soap
dispensers



Plastic/metal bottle &
jam jar lids



Do NOT put these in your blue bin

- Nappies – either clean or used
- Food waste
- Black bin bags
- Animal bedding
- General waste
- Textiles/fabric
- Mirrored glass
- Pyrex
- Foil that doesn't stay together when scrunched up, such as pet food pouches, tea and coffee wrappers and crisp packets
- Rigid plastics such as garden furniture, toys and coat hangers
- Plant pots and garden trays
- Expanded polystyrene or bubble wrap
- Electronics and batteries

Why can't I put these in my blue bin?

Our waste partners, who process and recycle your waste, do not accept these items, and if you put them in your bin it could lead to the truck-load of recycling being rejected.



Please only use your black bin for items you can't recycle, including:

- General waste
- Food waste
- Nappies
- Expanded polystyrene and bubble wrap
- Plant pots and garden trays
- Pyrex
- Broken glass (wrapped in newspaper)
- Foil that doesn't stay together when scrunched up



Please put these items in your brown bin

- Grass cuttings
- Leaves
- Weeds
- Plant and flower cuttings
- Garden plants
- Windfall garden fruit/vegetables



Do NOT put these items in your brown bin

- Food waste
- Large branches
- Sawdust
- Soil & turf
- Rocks
- Stones
- Animal bedding
- Paper
- Plastic bags

Why can't I put these in my brown bin?

We send all our brown bin recycling to a local farmer who turns your garden waste into compost to use on the farm. Large branches, stones and turf will not break down into compost within time.

**Garden waste
sign up**

Sign up for your garden waste bin service
www.lichfielddc.gov.uk/mygardenbin
or call 0345 002 0022

What to take to your local household recycling centre (tip)

- Old paint
- Soil, turf, rocks and stones
- Large rigid plastic items such as garden furniture
- Large branches and sawdust
- Electronic equipment
- Clothes and textiles
- DIY job refuse
- Building waste and rubble
- Old windows/doors
- & more – check online to see what your nearest tip takes and what charges could apply

Other items you can recycle at your local household recycling centre

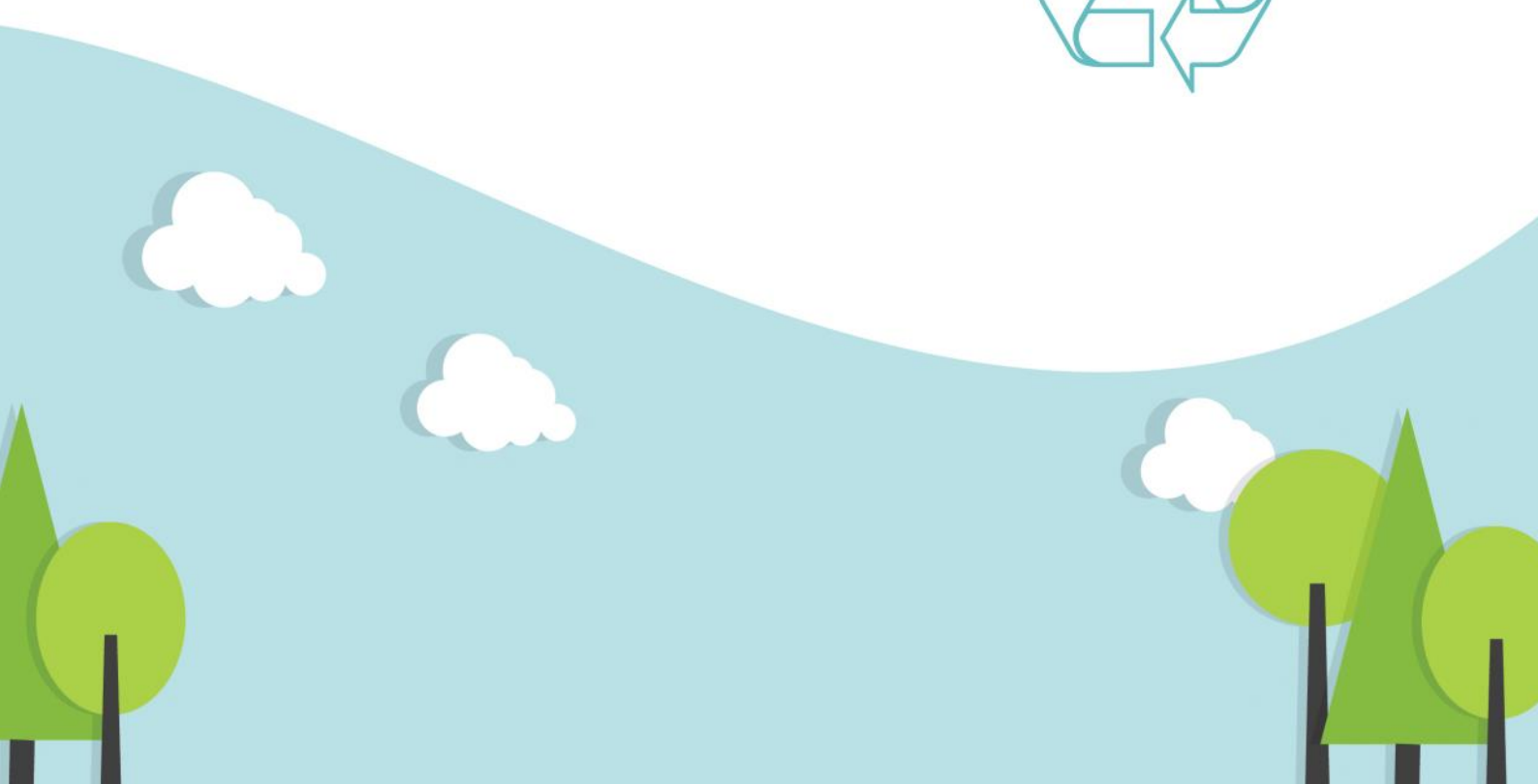
- Batteries
- Low energy lightbulbs
- Electronic equipment

Where is my nearest tip?

Staffordshire County Council runs household recycling centres across the county. There are two in the district:

- Witley Drive, Trent Valley Road, Lichfield WS13 6EU
- Ring Road, Chase Terrace, Burntwood WS7 3JQ

Find out more at www.lichfielddc.gov.uk/tips.



USE LESS



Here are some ways you can help to create less waste

- Take unwanted items to a charity shop, use textile and shoe collection recycling points or sell them
- Consider buying a kitchen caddy and home composter, and recycling your food and garden waste at home. We've teamed up with [getcomposting.com](https://www.getcomposting.com) to offer great value home compost bins!
- Consider buying loose fruit and vegetables rather than plastic packaged options
- Remember your reusable bags when shopping and reuse any fruit and veg plastic bags
- Ditch plastic straws - use paper instead or just drink from the glass
- Use a reusable water bottle
- Use a reusable coffee cup – but remember to carry it with you!
- Consider investing in fewer items that are better made
- Consider using cloths rather than disposable wipes
- Consider shopping in markets and independent food shops – they generally use less packaging
- Choose glass over plastic packaging if given the choice as glass can be recycled endlessly
- Consider switching to real nappies rather than disposable ones
- Consider using low energy lightbulbs and rechargeable batteries
- Consider buying canned pet food rather than pouches as we can't recycle pouches
- Consider making your own cleaning products – there are lots of recipes online just search 'DIY cleaning products'
- Look for products in recycled packaging or packaging that is easily recycled

Top tip: Keep your recycling box/bin next to your rubbish bin and talk to everyone in your home about what and how to recycle.

Top tip: Aluminium foil can be recycled endlessly. To check it's aluminium, scrunch it up. If it stays together that means it is and can be recycled.

Top tip: Get more into your blue bin by flattening boxes and squashing plastic bottles, drink cartons and cans.

www.lichfielddc.gov.uk/wasteless



If you need this guide in large print, please email media@lichfielddc.gov.uk or call 01543 308778

**working
together**

**for a
greener future**

Lichfield
district council
www.lichfielddc.gov.uk

Tamworth
Borough Council