



Lichfield
District Council

Lichfield District Council

Not your typical council

The Local
Government
Graduate
Programme

Impact.

Why Lichfield District Council?

- A forward-thinking council with a **commercial, modern approach**
- A **high-performing organisation** with a clear long-term vision
- A supportive culture that **invests in early careers**
- Delivering **visible projects and services** that make a difference every day
- Nationally recognised – including **Council of the Year 2026**

If you're a graduate looking for responsibility, pace and purpose from day one – this is the place for you!

Our offer to you

- **Trusted early** – work on projects that matter
- **Real pace** – be part of a council that delivers
- **Support to grow** – with leaders who invest in your development
- **Variety** – broad experience to shape your career
- **Be part of change** – including local government reorganisation
- **Flexible working** – in a well-connected vibrant district



Fully funded private health insurance

Annual performance bonuses

Employee discounts platform

Discounted leisure centre memberships

Fully flexible and hybrid working

Modern, open plan offices



**Sector leading
staff benefits**

A great place to live and work

- **Only 35 minutes from Birmingham** – with great train and road connectivity
- **Vibrant night-time economy** – known for its bars, restaurants, and cultural offer
- **Steeped in history and heritage** – famous for its three steeped cathedral
- **Award winning parks** – with over 300 acres of green open space





A council that invests in early careers

- Supported **30+ young people** via apprenticeships and graduate programmes
- Commitment to **giving you the best possible experience**
- You'll work with **senior leaders and councillors** on a regular basis
- Working on **high-priority projects that have impact**

A vibrant Young Professionals Network

- **Set up by young professionals** to create connection, confidence and further development opportunities
- They meet regularly both **socially and professionally**
- An **open and inclusive** network





"It's a really supportive place to start your career. After leaving uni I felt out of my depth, but everyone here is approachable and happy to help, which makes a big difference. You can **be yourself, learn on the job and get stuck into real work early on** – plus it's a genuinely **fun place to work!**"

- Aimee

Don't just take our word for it...



"Having worked for larger organisations in the past, coming to LDC has meant I no longer feel like a nameless cog in a machine."

- Xavier

"As a young person working for LDC, **the support from everyone at all levels has been incredible!** People want to watch you win and help you get there. Working at LDC has been the best career move I've ever made."

- Georgia



"I've had **so many fantastic experiences** with LDC. They've given me the opportunity to try out my own ideas in the real world, support my career growth and work right at the heart of what a modern council should be."

- Will

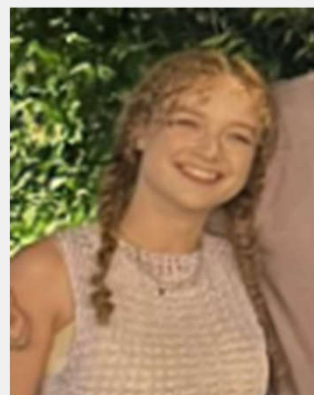
Don't just take our word for it..

Don't just take our word for it...



"I love the people here, everyone is genuinely really lovely. The work is fun, its engaging, **I get to do stuff I actually enjoy and care about.**"

- Joe



"LDC has **offered me so many different opportunities** I hadn't anticipated, and that scared me, but also nurtured my professional and personal confidence."

- Fiona

“I love the people here, I love who I work with. It’s just **a really, really nice place to work!**”

– Alex



“I’m now on my second apprenticeship with LDC... **I enjoyed the first so much, I came back for more!**”

- Nathan

**Don't just take
our word for it..**

Share your contact details

To **receive more information**
about working at Lichfield District
Council register your email
address via the form

•