

Accessibility Analysis of Potential Residential Development Sites

Lichfield Local Plan 2022 - 2043

December 2025

Staffordshire County Council - Connectivity Strategy
Team

Contents

1. Introduction
2. Methodology
3. Accessibility Outputs – Discussion of Results
4. Traffic Congestion and Delays in Lichfield District

List of Tables

1. Accessibility Indicator Scoring Table
2. CAST Settlements in Lichfield District
3. Sites and Housing Yield by CAST Type
4. Cumulative Results per Accessibility Indicator Within Each CAST Type Settlement

List of Figures

1. Contours of Walking Distance from Lichfield City Centre
2. Example of a Partially Accessible Site
3. Definition of CAST Settlement Types
4. Sites by Accessibility Score
5. Percentage Housing Yield by Accessibility Score
6. Housing Yield by Accessibility Score
7. Accessibility Scores by CAST Type Location
8. Location of Sites Withing Burntwood CAST 1 Settlement Boundary

Appendices

1. Parameters for Accessibility Indicators and Methodology
2. Accessibility Spreadsheet

1. Introduction

- 1.1. Lichfield District Council (LDC) is preparing its new Local Plan, covering the period to 2043. This will replace the adopted 2015 plan. In August 2025 they invited the Connectivity Strategy Team at Staffordshire County Council (SCC) to attend a regular Transport Working Group.
- 1.2. LDC is preparing to submit their Regulation 19 Local Plan in April 2026, with no prior Preferred Options consultation stage (Regulation 18).
- 1.3. SCC offer accessibility planning advice to Local Planning Authorities (LPAs) to help ensure that the right sites are allocated in Local Plans from a transport perspective. Transport is one of several considerations for LPAs when selecting their Preferred Option sites.
- 1.4. SCC undertook to provide this accessibility analysis for all residential sites that are currently under consideration by LDC. Whilst helping LDC in their site selection process, this analysis will form part of SCC's evidence base (as Local Highways Authority) to the Local Plan process.
- 1.5. LDC provided SCC with three datasets of potential sites they wished to be included in the analysis. These were merged into one comprehensive list, as detailed later in this report, to avoid duplication.
- 1.6. The analysis examines current levels of accessibility which will inform the type and extent of the mitigation required to make sites sustainable in transport terms. In general, the lower the accessibility score, the more infrastructure will be required to mitigate the impact of the development.
- 1.7. It is expected that the Preferred Option sites that are chosen, and the associated mitigation, will need to reflect the policies and strategies within SCC's new Local Transport Plan (LTP).

2. Methodology

2.1. The methodology adopted for the accessibility analysis followed a 5-stage process:

1. Selection of Sites
2. Selection of Accessibility Indicators
3. TRACC Calculations
4. Analysis on GIS Software
5. Excel Analysis

Selection of Sites

2.2. The first step of the process was to determine which sites should be assessed. LDC provided three datasets of potential sites they wished to be included in the analysis. These were the Call for Sites 2018, Call for Sites 2024, and SHLAA 2024. These datasets were merged into one comprehensive list. Where duplicated sites were different, for example, in size or yield, SCC prioritised the 2024 SHLAA dataset followed by the 2024 Call for Sites. The merged dataset contains 385 sites.

Selection of Accessibility Indicators

2.3 SCC's LTP sets out the accessibility indicators that SCC use (Section 5.3 1 of the LTP) to help ensure that the right sites are allocated in Local Plans from a transport perspective. The accessibility indicators help to gain an understanding of how accessible each of the sites are to key destinations in terms of active travel and public transport.

2.4 The accessibility indicators assess whether the sites are:

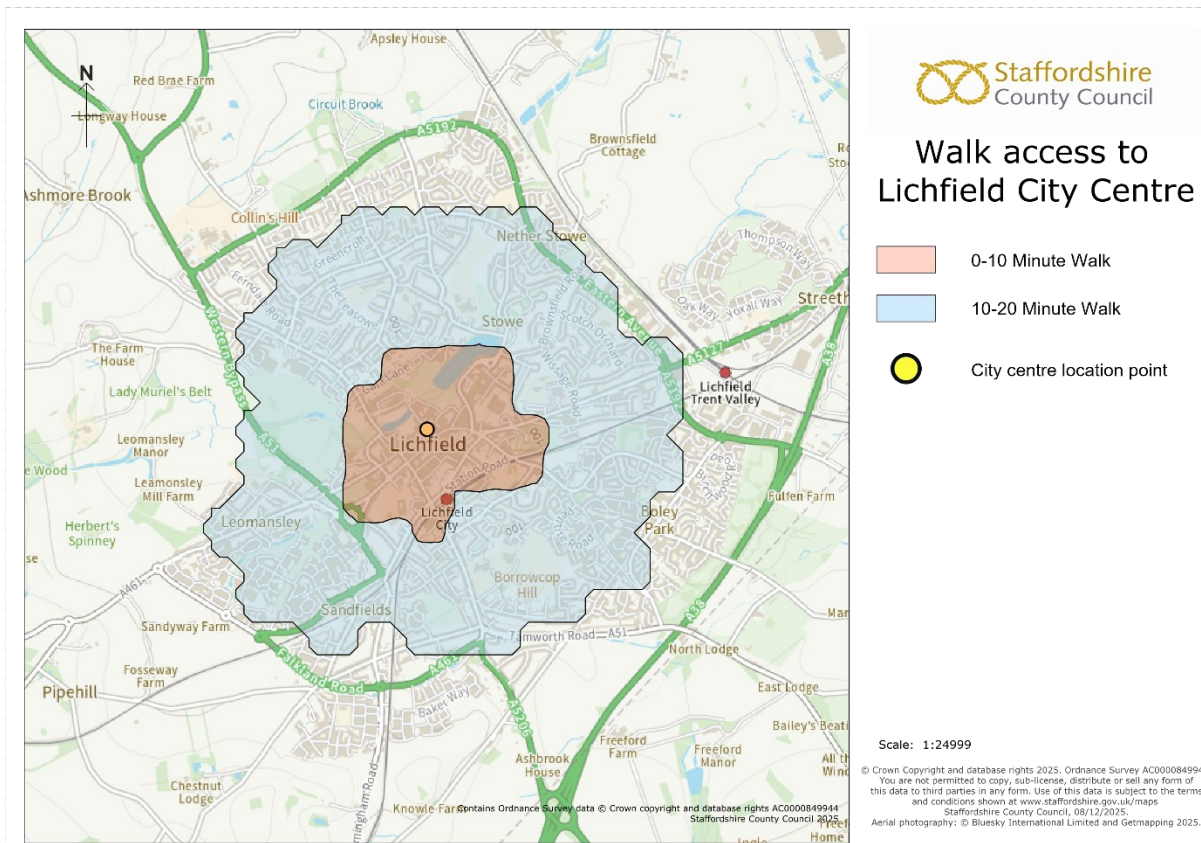
- within 400m of a bus stop served by a bus at least every 30 minutes?
- within 3km of a rail station?
- within a 10-minute or 20-minute walk and/or cycle ride to:
 - primary school?
 - secondary school?
 - GP?
 - town centre?
 - local neighbourhood centre?
- within a 30-minute or 60-minute journey by public transport to:

- hospital?
 - supermarket?
 - town centre?
 - well located to job opportunities?
- 2.5. More details on how the datasets of suitable destinations were determined, such as supermarkets and hospitals, can be found in Appendix 1.

TRACC Calculations

- 2.6. TRACC is an accessibility analysis software tool used across the transport planning industry. The software is used to assess walk, cycle and public transport journey times to key destinations. The software was populated with the latest public transport timetable data for Staffordshire and the surrounding areas, in this case a September 2025 bus timetable and Spring 2025 rail timetable. The latest road network information was also uploaded.
- 2.7. Accessibility calculations performed in TRACC are based upon the shortest travel time to the nearest destination. Public transport journey time calculations include the initial walk time to the stop, and interchange time plus the final walk from the stop to the destination. The software computes a journey time to the nearest destination point and the shortest journey times are returned. This is via the road and footpath network, so better simulates an actual journey rather than just a straight-line distance from origin to first stop or from the final stop to the destination point. The maximum walk distance to access a public transport stop was set at 400m.
- 2.8. Prior to running the TRACC calculations the parameters for each indicator are entered into TRACC, including the mode of travel being considered and the time of travel. These are described in Appendix 1.
- 2.9. The TRACC software produced travel time contours around the key destinations for each of the indicators mentioned above. An example of walk access to Lichfield City Centre is shown in Figure 1.

Figure 1. Contours of Walking Distance from Lichfield City Centre



2.10. It is important to note that this analysis represents a snapshot in time. Bus, metro, and rail timetables change periodically and therefore the results are only accurate at the time of analysis or until changes are made to the timetables. If services are added or withdrawn in the future, accessibility scores for sites may change.

2.11. TRACC uses the OS open roads network in calculations. As part of the calculation, the origin points 'snap' onto the closest section of the road network within 400m. Sense checks were performed on the TRACC results and, although uncommon, there were cases where the nearest section of road is, for example, a farm track, and the calculation could assume this as the closest access point.

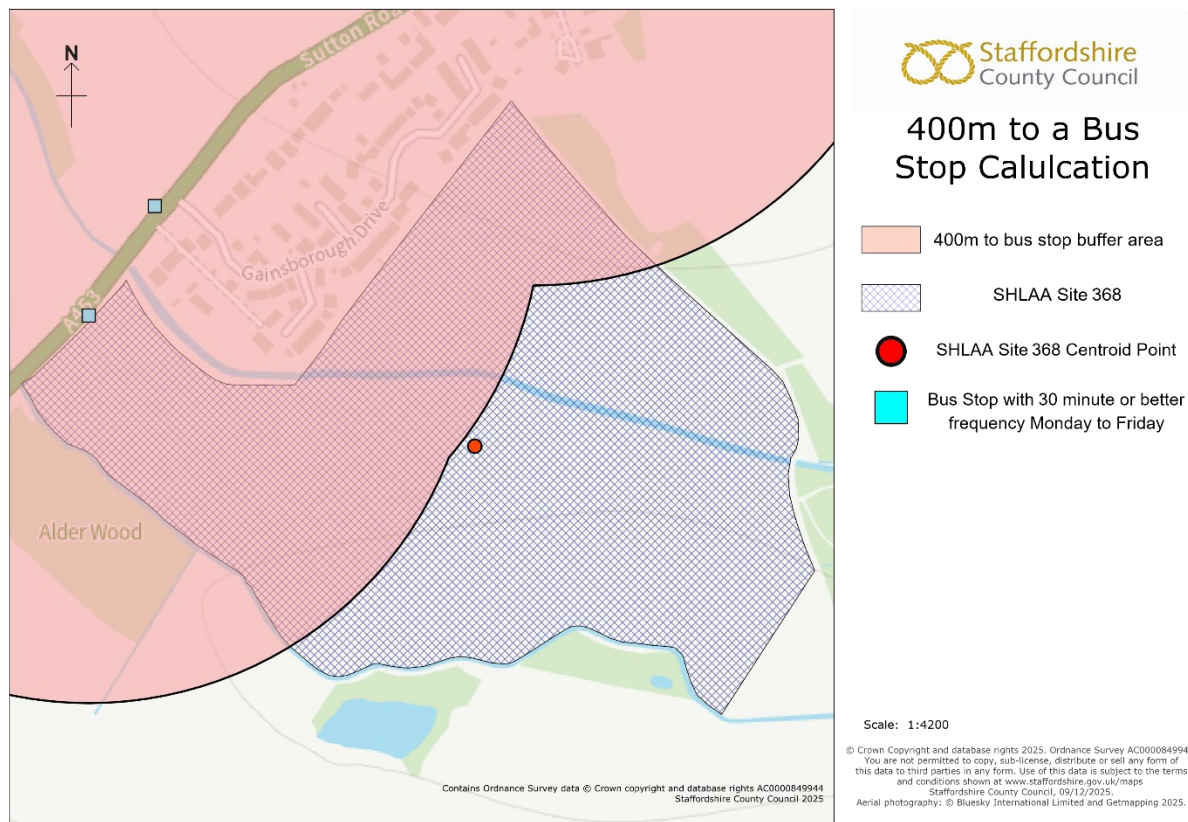
Analysis on GIS software

2.12. The TRACC travel time contours were imported into SCC's GIS and checked to ensure they were sensible. This included manual checks on route timings from destination points.

2.13. Following this a GIS layer containing each of the proposed sites was overlaid onto the travel time contours and a centroid point for each site was derived from GIS shapefiles. This allowed the analysis

to be conducted in a consistent manner, using the most central point of each site. For larger sites it could be the case that some of the site is accessible and some not. If the centroid point is not within the travel time contour, then the whole site will be considered inaccessible. An example of this can be seen in Figure 2, where the centroid point for SHLAA site 368 falls just outside of the 400m bus stop buffer, but there are sections of the site which do fall within the 400m bus stop buffer.

Figure 2. Example of a Partially Accessible Site



2.14. The GIS was then interrogated to calculate where the centroid points for each of the proposed sites were within the travel time contours. This provided the accessibility scores for each site and each accessibility indicator, which were then exported to Excel.

Excel Analysis

2.15. The results from the TRACC and GIS analyses were imported into Excel, where they were scored according to the scoring system

presented in Table 1. An overall accessibility score is provided for each site.

2.16. Appendix 2 contains the Accessibility scoring spreadsheet, ranked in order of most accessible sites (i.e. highest scoring).

Table 1. Accessibility Indicator Scoring Table

Indicator	Time Period	Mode of Travel	Scoring			Maximum Available Score
			0	1	2	
Access to Bus						
Is the site within 400m of a bus stop with a service frequency of 30 minutes or better?	Wednesday 08:00-09:00	n/a	No	n/a	Yes	2
Access to Rail						
Is the site within 3km of a rail station?	n/a	Walk or Cycle	No	n/a	Yes	2
Access to Schools						
Is the site within a 20-minute walk of a primary school within Staffordshire?	n/a	Walk	>20 mins	10 - 20 mins	0 - 10 mins	2 (Average of the four indicators)
Is the site within a 20-minute cycle of a primary school within Staffordshire?	n/a	Cycle	>20 mins	10 - 20 mins	0 - 10 mins	
Is the site within a 20-minute walk of a secondary school within Staffordshire?	n/a	Walk	>20 mins	10 - 20 mins	0 - 10 mins	
Is the site within a 20-minute cycle of a secondary school within Staffordshire?	n/a	Cycle	>20 mins	10 - 20 mins	0 - 10 mins	
Access to a GP						
Is the site within a 20-minute walk to a GP?	n/a	Walk	>20 mins	10 - 20 mins	0 - 10 mins	2
Access to Hospitals						
Can the site access a hospital within a 60-minute journey time using public transport?	Wednesday 08:00-10:00	Public Transport	>60 mins	30 - 60 mins	0 - 30 mins	2
Access to Supermarkets						
Can the site access a supermarket within 60-minute journey time using public transport?	Saturday 08:00-10:00	Public Transport	>60 mins	30 - 60 mins	0 - 30 mins	2
Access to Town/City Centres						
Is the site within a 20-minute walk of a town/city centre?'	n/a	Walk	>20 mins	10 - 20 mins	0 - 10 mins	2 (Average of the three indicators)
Is the site within a 20-minute cycle of a town/city centre?'	n/a	Cycle	>20 mins	10 - 20 mins	0 - 10 mins	
Is the site within a 60-minute journey time using public transport of a town/city centre?'	Wednesday 08:00-09:00	Public Transport	>60 mins	30 - 60 mins	0 - 30 mins	
Access to Local Centres						
Is the site within a 20-minute walk of a town/city centre OR Key Rural Centre OR Neighbourhood Centre OR a New Local Centre?'	n/a	Walk	>20 mins	10 - 20 mins	0 - 10 mins	2
Access to Employment						
Hansen score: Access to employment (60-minute maximum journey time)	Wednesday 07:30-09:30	Public Transport	>60 mins (No access)	Hansen score: 5 to 13962	Hansen score: 13962 +	2
Maximum Available Accessibility Score from the Indicators						18

N.B. Public Transport includes bus, rail and West Midlands metro in this assessment.

- 2.17. The scoring system was derived using the LTP accessibility indicators. Two, one and zero points were allocated to each of the nine indicators depending how well they performed within the indicator. For example, is the site within a 20-minute walk of a primary school? Two points were awarded of 0 – 10 minutes, one point for 10 – 20 minutes and zero points for greater than 20 minutes.
- 2.18. The indicators for trips to Schools and Town/City Centres had more than one measure per trip type – four for Schools and three for Town/City Centres, giving a maximum possible score of eight and six respectively. All other indicators had one measure, a maximum score of two.
- 2.19. The results from SCC’s Staffordshire Household Travel Survey 2023 have demonstrated that all journeys have equal significance, so it is therefore important not to provide more weight to the trips to Schools and Town/City Centres. To ensure equal weighting, the results for these two indicators were averaged giving a maximum score of two per indicator, aligning with all other indicators.
- 2.20. This gave a total possible score of between 0 and 18; the higher the score, the more accessible the site currently is. The highest any site achieved was 17.75; the lowest was 0.
- 2.21. The sites (385 in total) were then ranked in order of highest accessibility, and then further sorted by CAST settlement type. CAST is the Capability to Achieve Suitable Transport for each settlement within Staffordshire, as developed in SCC’s LTP.
- 2.22. Staffordshire has been broken up into five different types of places, which will require different types of interventions to achieve the LTP’s vision.
- 2.23. CAST type 1 settlements have a range of travel options available and are in close proximity to facilities. Type 2 settlements are adjacent to those type 1 settlements; type 3 are settlements on key transport corridors with some facilities; type 4 have bus services but limited facilities; and type 5 have limited transport infrastructure and are remote from facilities.
- 2.24. Figure 3 contains screenshots from Appendix 1.15 of the LTP which give a fuller definition of each of the five CAST type settlements.

Figure 3. Definitions of CAST Settlement Types

Introduction

We have developed a settlement hierarchy covering the whole County called Capability to Achieve Suitable Travel (CAST). Five different types of places have been identified which will require different types of interventions to achieve the LTP objectives.

Figure 1 shows the county split into the CAST areas. Lower Layer Super Output Area (LSOA) data was utilised to develop the settlement types and therefore LSOA boundaries form the basis of the plan.

Type 1: Settlements with travel options available and close proximity to facilities

Settlements with good transport infrastructure; frequent bus services (for Staffordshire), good access to a rail station, a wide range of services and facilities within walk/ cycle distance, employment opportunities available within the settlement, excellent road connections - A-roads through the settlement and motorway junctions/ trunk road within the settlement boundary or within easy reach.

Type 2: Settlements adjacent to those with travel options and facilities

Settlements separate to type 1 settlements but adjacent, so they benefit from the outer edge of the type 1 bus services and access to services and facilities, but these are likely to only be within cyclable distance. Connected to the type 1 settlement via A-roads - which facilitates the bus services and shorter cycle travel times.

Type 3: Settlements on key transport corridors with some facilities

Settlements are physically remote from type 1 settlements but connected via A-roads, B-road routes of local importance or rail corridors. Therefore, they benefit from naturally being on the route of inter-urban bus services and/ or have inter-urban rail stations providing connectivity to a range of services and facilities not available within the settlement. The settlement itself has some day-to-day services and facilities such as a local shop, school and GP surgery.

Type 4: Settlements with bus services and limited proximity to facilities

Settlements may be away from main roads and/ or on average have access to an hourly bus service. Residents have the long journey times via all modes to connect to a wide range of services and facilities. Walking, wheeling and cycling is attractive within the settlement but connections out of the settlement may not have facilities for walking and wheeling. Bus services are less frequent due to distance of route and number of settlements needed to be included in route for route to be commercial; services may be provided by the LA and therefore under threat from future funding limitations. Very limited employment opportunities within walk/ cycle distance. Limited services and facilities are available within the settlement

and therefore access to a wide range of services and facilities requires travel outside the settlement. Better bus services may be balanced against very limited facilities within the settlement.

Type 5: Settlements with very limited transport infrastructure and remote from facilities

Settlements are away from main roads and have the longest journey times via all modes to connect to a wide range of services and facilities. Unlikely there will be any bus services or services and facilities within the settlement meaning the settlement relies on travel/ digital connectivity to meet day to day needs such as shopping, education and employment. Infrequent bus services may be present and are provided by the LA and therefore under threat from future funding limitations.

2.25. For Lichfield District the CAST 1 - 5 settlements are listed in Table 2.

Table 2: CAST Settlements in Lichfield District

CAST	Settlements
CAST 1	<ul style="list-style-type: none"> • Lichfield • Burntwood • Rugeley *
CAST 2	<ul style="list-style-type: none"> • Armitage with Handscare • Fazeley • Little Aston • Hopwas
CAST 3	<ul style="list-style-type: none"> • Shenstone
CAST 4	<ul style="list-style-type: none"> • Fradley • Fazeley • Alrewas • Whittington • Kings Bromley
CAST 5	<ul style="list-style-type: none"> • Everything else

* Rugeley CAST 1 settlement boundary includes some Output Areas within Lichfield administrative boundary.

2.26. The CAST settlements were formed by grouping multiple Output Area (OA) boundaries to create CAST 1 - 4 type settlements, with CAST 5 comprising the remaining OAs in Staffordshire.

2.27. It would be expected that the proposed sites which fall within the higher order CAST areas, particularly CAST 1, are likely to have higher accessibility scores. They have more and better facilities closer at hand, including shops, doctors, hospitals and employment. Those development sites in lower order CAST settlements are likely to become car dependent as they are more isolated from services.

2.28. However, there are CAST 5 settlements that have scored well. This generally occurs where the site is located on the edge of a higher order settlement or a frequent bus service passes and stops through a CAST 5 location on an inter urban route. For example, some sites are an extension to the existing urban area and are close enough to the infrastructure and services within the adjacent higher order settlement. Where this occurs, explanatory comments have been provided in the Excel spreadsheet.

2.29. SCC will look to update the CAST boundaries as new development sites are allocated or built.

3. Accessibility Outputs – Discussion of Results

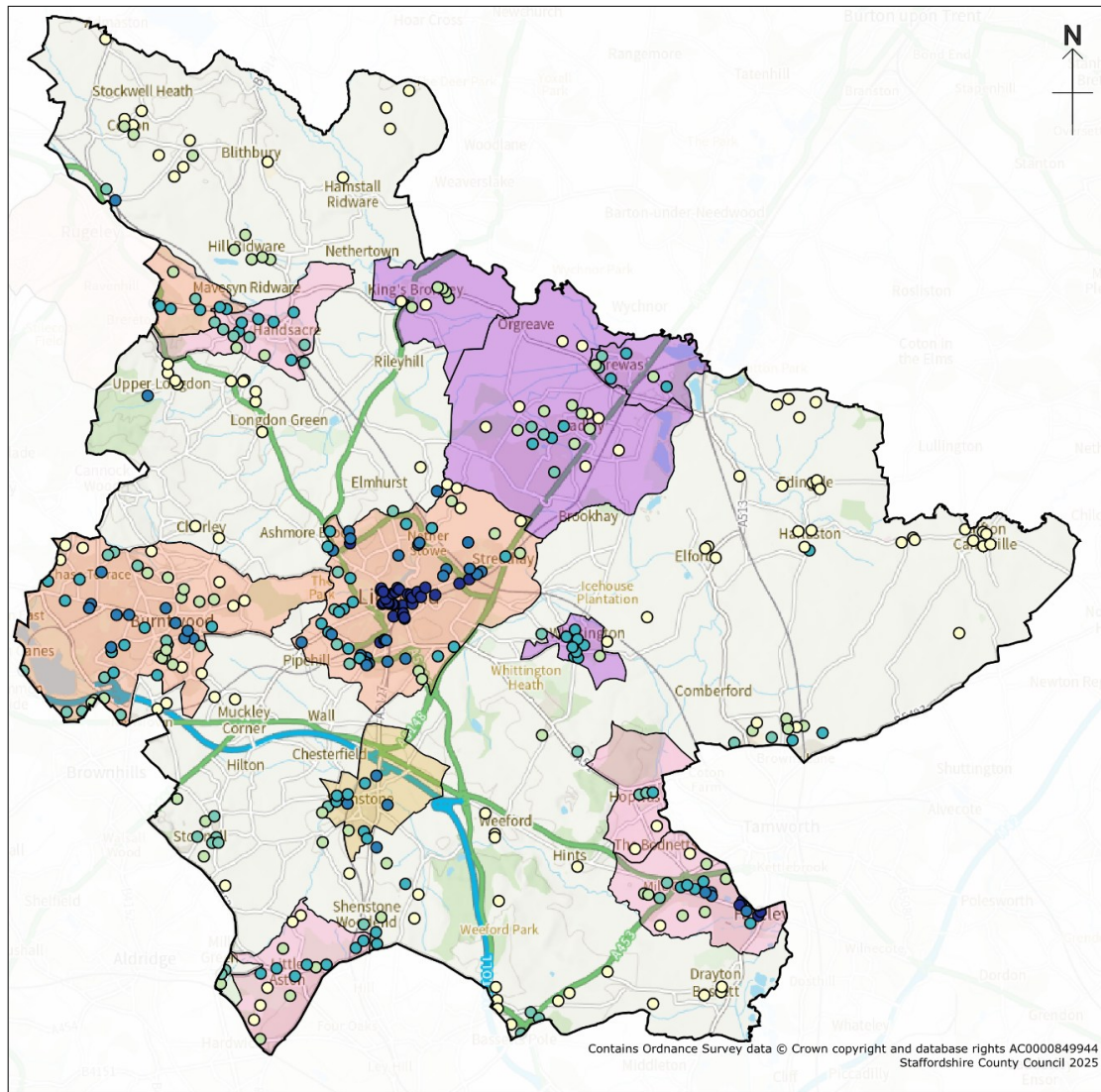
Key Statistics

Sites by Accessibility Score

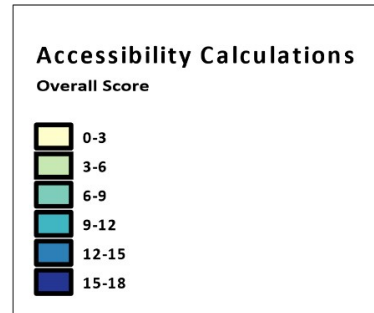
- 3.1. Figure 3 displays the 385 analysed sites, represented by their centroid points. Each point is colour-coded according to its overall accessibility score, grouped into bands of three (18 – 15; 15 – 12; 12 – 9; 9 – 6; 6 – 3; and 3 – 0). CAST settlement boundaries are also included to provide context and show their distribution across the Lichfield district.

- 3.2. Although there are exceptions, it generally shows the higher scoring, i.e. more accessible sites, are located within Lichfield city which has more facilities closer at hand and better transport links. Sites in the more remote CAST 5 settlements predominantly score poorly, having limited access to public transport and fewer nearby facilities.

Figure 3: Sites by Accessibility Score



Sites coded by accessibility calculations overall score



Scale: 1:130000

© Crown Copyright and database rights 2025. Ordnance Survey AC0000849944
 You are not permitted to copy, sub-license, distribute or sell any form of this data to third parties in any form. Use of this data is subject to the terms and conditions shown at www.staffordshire.gov.uk/maps
 Staffordshire County Council, 16/12/2025.
 Aerial photography: © Bluesky International Limited and Getmapping 2025.

Proportion of Sites Falling Within Each CAST Type Settlements

3.3. Table 3 quantifies the number of sites which fall within each of the CAST type settlements, along with their housing yield. There are 142 of the 385 sites located in CAST type 1 settlements, with a housing yield of nearly 18,000. There are also 133 sites falling under CAST 5 areas, which predominantly have fewer facilities and poorer transport links, generating a yield of nearly 30,000 dwellings.

Table 3. Sites and Housing Yield by CAST Type

	Number of sites	Percentage of total sites	Total yield (No. of Dwellings)	Percentage yield
CAST 1	142	37%	17,668	23%
CAST 2	56	15%	16,634	22%
CAST 3	10	3%	1,612	2%
CAST 4	132	11%	9,986	13%
CAST 5	133	35%	29,450	39%
Total	385		75,350	

3.4. The pie charts in Figures 4 and 5 also show the housing yield, but by accessibility score bands. Again, this demonstrates that the majority of the proposed new housing fall in areas of lower accessibility, with over 50% in the lowest band and 84% in the lowest three bands. Only 1% are in the top scoring band.

Figure 4. Percentage Housing Yield by Accessibility Score

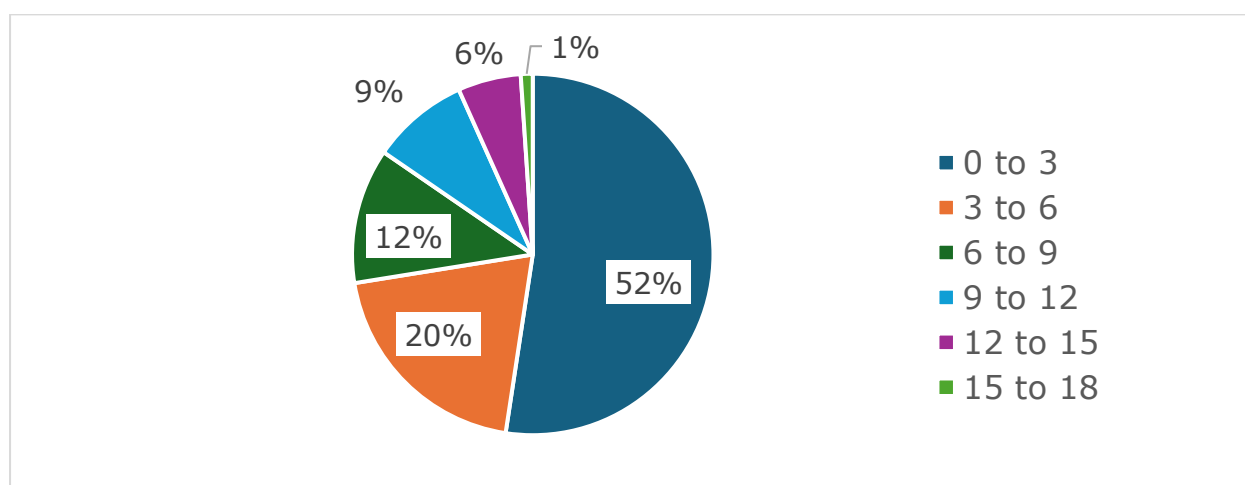
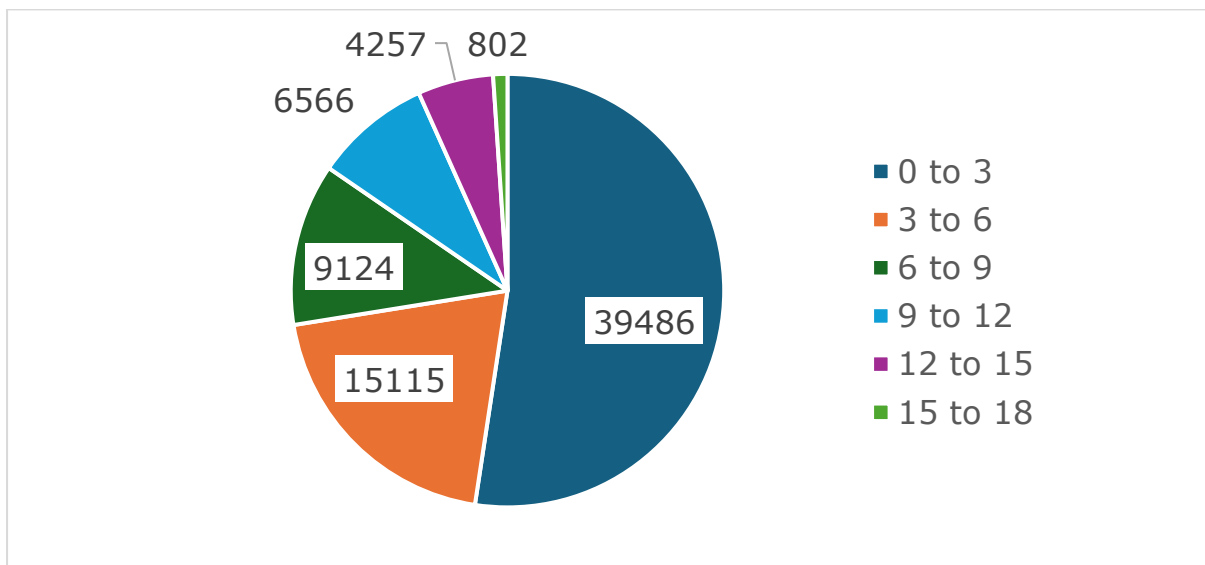


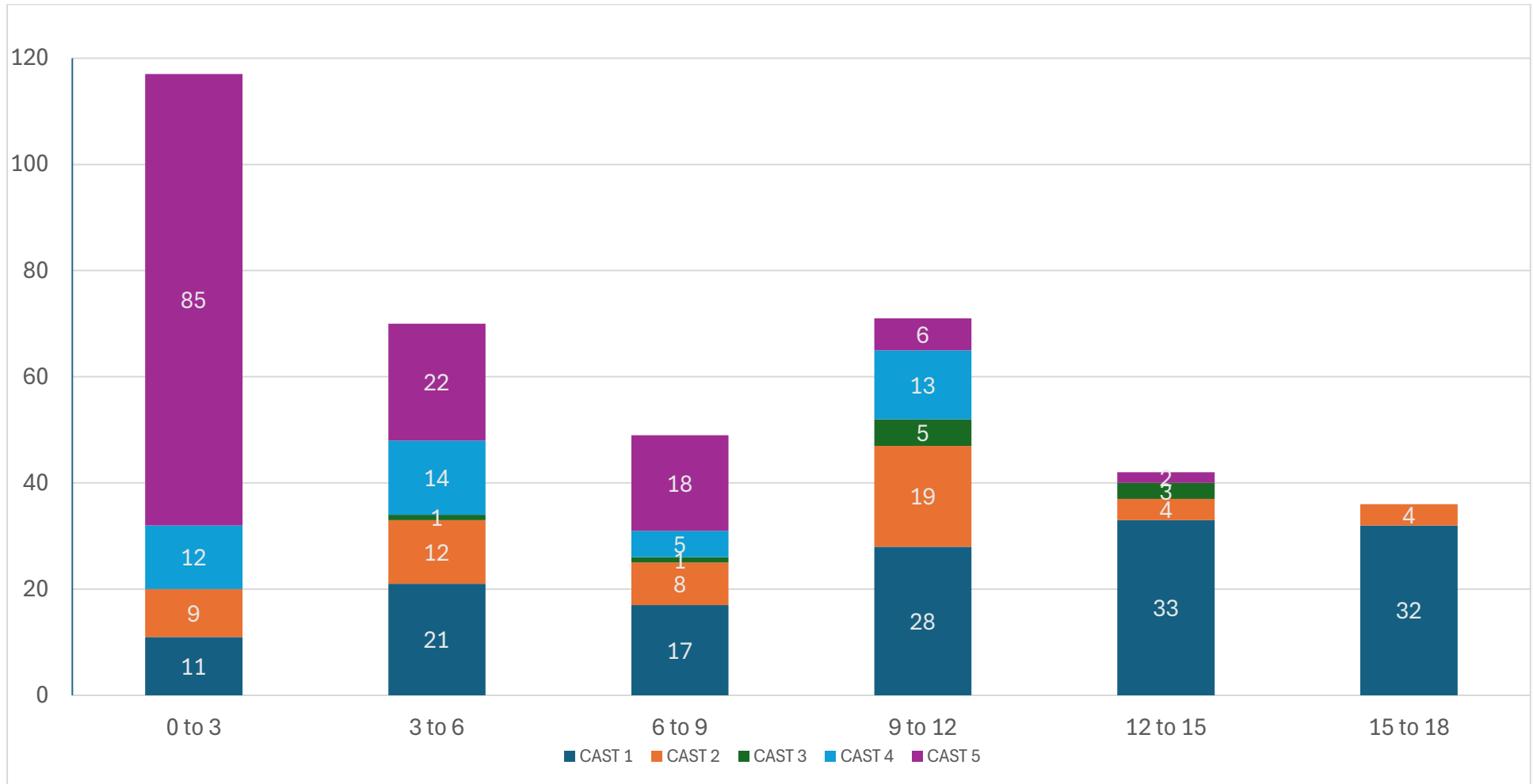
Figure 5. Housing Yield by Accessibility Score



Accessibility Scores by CAST Type Location

3.5. Figure 6 shows the number of sites in each accessibility scoring band, stacked by the CAST type settlements they fall within. The top scoring bands are predominantly made up of sites from CAST 1 locations, and the lowest scoring band from CAST 5 locations, as expected.

Figure 6. Accessibility Scores by CAST Type Location



Accessibility Indicators by CAST Type Settlement

- 3.6. Table 4 considers the cumulative results per accessibility indicator of all the proposed sites within each CAST type settlement. It gives an indication of the strengths and weaknesses of each CAST type. However, each site should be taken on its own merit and may perform better or worse than the cumulative overview provided in Table 4.

- 3.7. As expected, CAST 1 type settlements generally provide the higher accessibility scores. CAST 3 appears slightly better than CAST 2 on most indicators. This is partly due to Shenstone being the only CAST 3 settlement and it benefits from a rail station and several local services.

Table 4. Cumulative Results per Accessibility Indicator Within Each CAST Type Settlement

	400m to Bus Stop		3km to Rail Station		Access to Schools (Averaged)		Access to GP		Access to Hospitals		Access to Supermarkets		Access to Town/City Centres (Averaged)		Access to Local Centres		Access to Employment	
	Count	%	Count	%	Count	%	Count	%	Count	%	Count	%	Count	%	Count	%	Count	%
CAST 1	96	68%	83	58%	142	100%	100	70%	113	80%	102	72%	141	99%	116	82%	69	49%
CAST 2	37	66%	26	46%	56	100%	23	41%	44	79%	30	54%	41	73%	31	55%	15	27%
CAST 3	4	40%	10	100%	10	100%	10	100%	8	80%	8	80%	4	40%	10	100%	6	60%
CAST 4	6	14%	0	0%	44	100%	15	34%	34	77%	27	61%	10	23%	26	59%	19	43%
CAST 5	22	17%	32	24%	127	95%	20	15%	44	33%	33	25%	57	43%	12	9%	28	21%
Total	165		151		379		168		243		200		253		195		137	

Little Aston, Shenstone and Burntwood

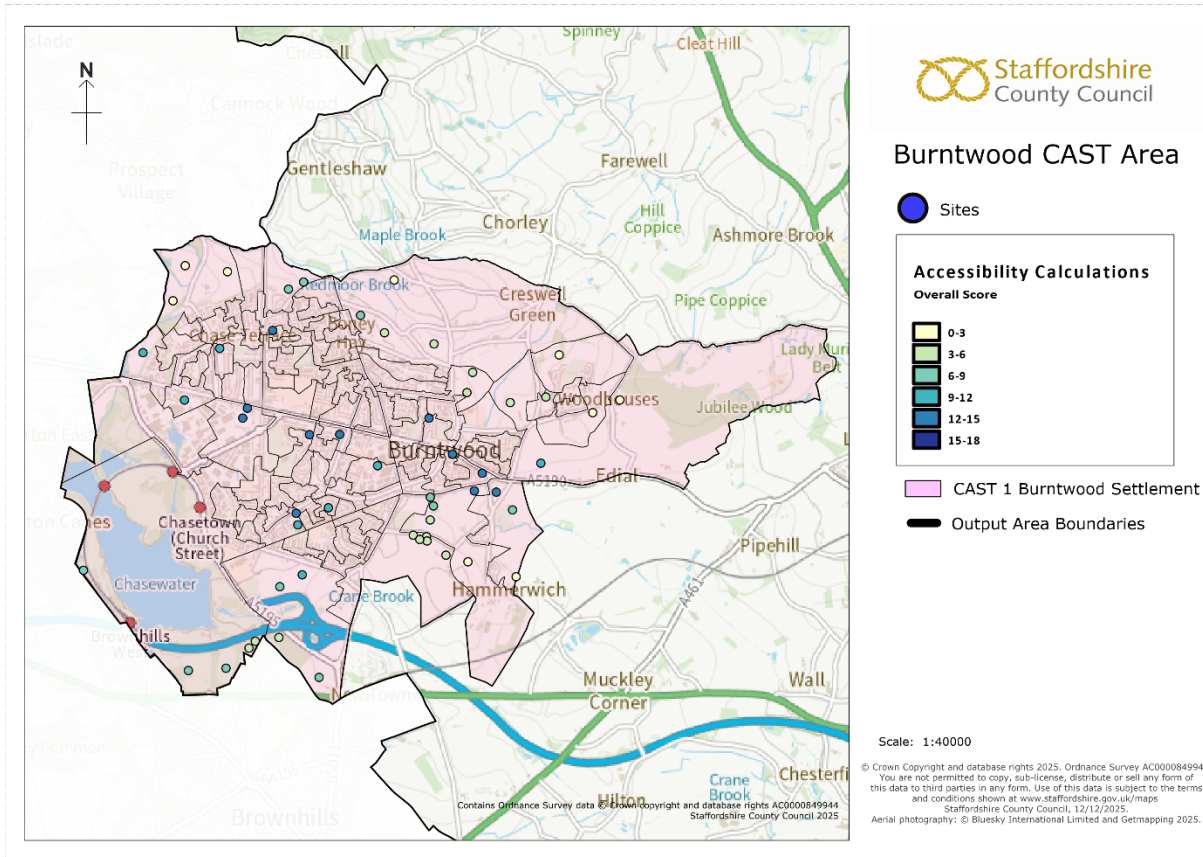
3.8. We have provided three examples of CAST 1, 2 and 3 settlements where development sites within/adjacent to them have received a variety of scores:

Little Aston: There are 16 sites which fall within this CAST 2 settlement. Their overall accessibility score ranges from 10.92 to 0.25. Sites close to Blake Street rail station score better. As well as these, sites near Little Aston Lane and Walsall Road score higher, as there is a 30 minute bus service (no. 6) running from Walsall to Sutton through Little Aston. This results in them scoring well for supermarkets, hospitals and bus services. The sites which perform poorly are the larger sites where much of the site is over 400m from bus stops, and/or they have poor access to facilities and services.

Shenstone: Shenstone is classified as a CAST 3 site as it is physically remote from CAST 1 areas, but still well connected by A Roads, B Roads and rail corridors. Shenstone has a rail station which benefits from a 30 minute service along the cross-city line. The X3 bus service runs along the Birmingham Road to the east of the settlement area. The primary school, GP and local centre all help contribute to better accessibility scores for the sites located in or near to Shenstone. As a result, sites within the CAST 3 boundary, and those just outside of it in a CAST 5 area, score relatively well in accessibility terms.

Burntwood: There are 54 sites that fall within the CAST 1 Burntwood area. They range from scores of 13.75 to 1.08. The sites that score better within Burntwood are close to the centre of Burntwood, near to shops and services such as GPs and schools, as well as being close to bus services with 30 minute or better frequency. The five lowest scoring sites within Lichfield district's CAST 1 areas are all in Burntwood. Despite being within a CAST 1 area, these sites have no bus/rail access, and no access to supermarkets, schools and GPs. The CAST 1 boundary is made up of OAs which span into the rural areas surrounding Burntwood, with poorer road links, making them quite remote from the facilities within Burntwood (See Figure 7).

Figure 7. Location of Sites Within Burntwood CAST 1 Settlement Boundary



4. Traffic Congestion and Delays in Lichfield District

- 4.1. Appendix 1.8 of the LTP provides the Lichfield District Transport Data Report. This contains extensive data, that needs to be considered during the selection of Preferred Option sites. It includes congestion data (traffic delays) for Lichfield and Burntwood on a weekday AM and PM peak in September and October. All development sites will need to consider appropriate mitigation measures that would reduce the impact on congested corridors.
- 4.2. The Local Plan will also need to consider the LTP Transport Data Reports provided for neighbouring district/boroughs. The Tamworth Borough Transport Data Report is provided in Appendix 1.13 and the Cannock Chase District Transport Data Report, covering Rugeley, is provided in Appendix 1.6.
- 4.3. There are serious concerns regarding any further development in the North of Tamworth due to capacity constraints on the highway network, limited sustainable transport options and a lack of local facilities available to serve housing in this area.
- 4.4. To accommodate any further growth at Fradley, junction improvements at Hilliard's Cross and additional local facilities in Fradley are likely to be required. However, there are concerns about the deliverability of any meaningful junction improvement at Hilliard's Cross due to a lack of land. Liaison will also be required with National Highways.

Appendix 1. Parameters for Accessibility Indicators and Methodology

Bus Stop	<p>Using GIS software, a 400 m buffer was applied around bus stops that operate at a frequency of 30 minutes or better between 08:00 and 09:00, Monday to Friday. Sites located within this buffer are considered to have access to a bus stop within 400 m, and score 2 in our calculations.</p> <p>This distance is recommended by Active Travel England as an appropriate threshold for accessibility and aligns with the accessibility planning guidance in the LTP.</p>
Rail Stations	<p>A distance of 3 km (approximately an 11-minute walk or a 37.5-minute cycle) was chosen as an appropriate threshold, and it aligns with the accessibility planning guidance in the LTP. Sites within 3km walk or cycle receive a score of 2.</p>
Schools	<p>The location of primary and secondary schools within Staffordshire were sourced from the County Council dataset. SCC's education team confirmed that there are very few cases of children attending schools over the boundary in the West Midlands so these were excluded from the analysis. A site is considered to have good access if it can reach a primary or secondary school within a 20-minute walk or cycle. This is reflected in the scoring system:</p> <ul style="list-style-type: none"> • 0–10 minutes walk or cycle = score of 2 (best access) • 10–20 minutes walk or cycle = score of 1 (still good access). <p>This approach aligns with the accessibility planning guidance outlined in the LTP.</p>
GPs	<p>GP surgeries within Staffordshire were sourced from SCC's dataset.</p> <p>A site is considered to have good access if it can reach a GP within a 20-minute walk. This is reflected in the scoring system:</p> <ul style="list-style-type: none"> • 0–10 minutes walk = score of 2 (best access) • 10–20 minutes walk = score of 1 (still good access). <p>This approach aligns with the accessibility planning guidance outlined in the LTP.</p>
Hospitals	<p>Hospital locations were sourced from SCC's dataset and supplemented with information from the NHS website. Hospitals outside the county were also</p>

	<p>included, as they can often be accessed by public transport within the defined 60-minute journey time. Accessibility is assessed using two time bands:</p> <ul style="list-style-type: none"> • 0–30 minutes = score of 2 (best access) • 30–60 minutes = score of 1 (still good access). <p>These thresholds align with the accessibility planning guidance outlined in the LTP. Public transport timetables for the AM peak period were used, as hospital appointments are most likely to occur on weekdays. This ensures that accessibility reflects realistic travel conditions during typical appointment times.</p>
Supermarkets	<p>Supermarket locations were sourced from Geolytix’s Supermarket Retail Points dataset, which is updated quarterly. Using their geocoded data ensures we remain up to date with openings and closures. Geolytix’s categorisation also helps determine which supermarkets to include. We selected traditional and discounter supermarkets, as convenience and freezer centres typically do not offer the full range of products needed for a weekly shop.</p> <p>Accessibility is assessed using two-time bands:</p> <ul style="list-style-type: none"> • 0–30 minutes = score of 2 (best access) • 30–60 minutes = score of 1 (still good access). <p>These thresholds align with the accessibility planning guidance outlined in the LTP. Public transport timetables for weekends were used, as most shopping trips occur on Saturday mornings.</p>
Town/City Centre	<p>CAST Type 1 town and city centre areas were used to assess accessibility to a town or city centre. Single points at central locations were chosen for this purpose, such as the corner of Market Street and Conduit Street in Lichfield.</p> <p>Sutton Coldfield, located in the West Midlands was also included as it is easily accessible by public transport from proposed sites in South Lichfield, which borders the West Midlands. It also fits with the definition of a Type 1 Cast area <i>‘Settlements with good transport infrastructure; frequent bus services (for Staffordshire), good access to a rail station, a wide range of services and facilities within walk/ cycle distance, employment opportunities available within the settlement, excellent road connections - A-roads</i></p>

	<p><i>through the settlement and motorway junctions/ trunk road within the settlement boundary or within easy reach.</i></p> <p>Accessibility is assessed using two-time bands for public transport:</p> <ul style="list-style-type: none"> • 0–30 minutes = score of 2 (best access) • 30–60 minutes = score of 1 (still good access). <p>And for walk/cycle:</p> <ul style="list-style-type: none"> • 0–10 minutes walk or cycle = score of 2 (best access) • 10–20 minutes walk or cycle = score of 1 (still good access). <p>These thresholds align with the accessibility planning guidance outlined in the LTP. Public transport timetables for the AM peak were used to reflect common access town/city centre times.</p>
Local Centres	<p>Following advice from Lichfield District a selection of local town/city centres, key rural settlements, new local centres and neighbourhood centres were included as local centres. These are outlined as 'local shops and services' in Lichfield District Local Plan Issues and Options (Oct 24).</p> <p>A site is considered to have good access if it can reach a local shop and services within a 20-minute walk. This is reflected in the scoring system:</p> <ul style="list-style-type: none"> • 0–10 minutes walk = score of 2 (best access) • 10–20 minutes walk = score of 1 (still good access). <p>A 20-minute walk time was chosen as this aligns the accessibility planning guidance outlined in the LTP.</p>
Employment	<p>The employment destination data is a combination of data sources including the Inter-Departmental Business Register (IDBR), local job data from the Economic Regeneration team and from Census Workplace data. Where there are multiple jobs at one location e.g. town centres or business parks these have been given one location point with a total number of jobs. Overall, there are 300 sites covering Staffordshire as well as areas outside the county that can be reached by public transport.</p> <p>For employment destinations a Hansen score was calculated. This combines the number of destinations that can be accessed within a 60-minute journey time with the disbenefits of travel in terms of journey time and the total number of jobs available at the</p>

	<p>destination. The higher the score, the greater the level of access and choice.</p> <p>Fisher-Jenks natural breaks was used to separate the scores</p> <ul style="list-style-type: none">• 5-13962 = score of 2 (best access to a range of jobs)• 13962+ = score of 1 (good access to a range of jobs) <p>This aligns with the LTP as it states 'well located to job opportunities'.</p>
--	---

Appendix 2 – Accessibility Spreadsheet

Section of Sites	Reference	Name	Housing Yield	Is within 400m of a bus stop which is served by a service with a frequency of 30 minutes or quicker (Mon-Fri) Yes or no (2 or 0)	'Is within 3km to a rail station' (Walk or cycle) Yes or no (2 or 0)	Are they within a 20 minute walk to a primary school within Staffordshire	Are they within a 20 minute cycle to a primary school within Staffordshire	Are they within a 20 minute walk to a secondary school within Staffordshire	Are they within a 20 minute cycle to a secondary school within Staffordshire	Average of 4 Education related calculations	'Are they within a 20 minute walk to a GP'	'Can they access a Hospital within 60mins journey time using public transport'	'Can they access a supermarket within 60mins journey time using public transport'	Are they within a 20 minute walk to a town/city centre?	Are they within a 20 minute cycle to a town/city centre?	Are they within 60 mins journey time using public transport to a town/city centre?	Average of Town/City centre calculations	Are they within a 20 minute walk to a town/city centre OR Key Rural Centre OR Neighbourhood Centre OR a New Local Centre?	Hansen score access to employment Wednesday 07:30-09:30	Total Accessibility Score	Rank	CAST Settlement Area	Commentary	
						No access = 0 0-10 minutes = 2 10-20 minutes = 1	No access = 0 0-10 minutes = 2 10-20 minutes = 1	No access = 0 0-10 minutes = 2 10-20 minutes = 1	No access = 0 0-10 minutes = 2 10-20 minutes = 1		No access = 0 0-10 minutes = 2 10-20 minutes = 1	Wednesday 08:00-10:00 No access/60min + = 0 0-30 = 2 30-60 = 1	Saturday 08:00-10:00 No access/60min + = 0 0-30 = 2 30-60 = 1	No access = 0 0-10 minutes = 2 10-20 minutes = 1	No access = 0 0-10 minutes = 2 10-20 minutes = 1	Wednesday 08:00-09:00 No access = 0 0-30 minutes = 2 30-60 minutes = 1		No access = 0 Score of 5-13962 = 1 Score of 13962+ = 2						
SHLAA	112	Redcourt House, Land Adjacent to	6	2	2	2	2	1	2	1.75	2	2	2	2	2	2	2.00	2	2	17.75	1	1	Lichfield	
SHLAA	319	Davidson Road, The Old Brewery Maltings, Lichfield	6	2	2	2	2	1	2	1.75	2	2	2	2	2	2	2.00	2	2	17.75	1	1	Lichfield	
SHLAA	196	St. Michaels School detached playing fields	9	2	2	2	2	1	2	1.75	2	2	2	2	2	2	2.00	2	2	17.75	1	1	Lichfield	
SHLAA	113	Redcourt Car Park, Tamworth Street	13	2	2	2	2	1	2	1.75	2	2	2	2	2	2	2.00	2	2	17.75	1	1	Lichfield	
SHLAA	151	Land at Tesco Store, Church Street, Lichfield	22	2	2	2	2	1	2	1.75	2	2	2	2	2	2	2.00	2	2	17.75	1	1	Lichfield	*Planning Permission - 07/00369/FULM*
SHLAA	329	Station Road, Bridge House, Lichfield	24	2	2	2	2	1	2	1.75	2	2	2	2	2	2	2.00	2	2	17.75	1	1	Lichfield	*Site Under Construction*
SHLAA	138	Guardian House, Birmingham Road, Lichfield	27	2	2	2	2	1	2	1.75	2	2	2	2	2	2	2.00	2	2	17.75	1	1	Lichfield	*Site under construction. Site under construction for C2 Use*
SHLAA	108	Land at Birmingham Road, redevelopment area	91	2	2	2	2	1	2	1.75	2	2	2	2	2	2	2.00	2	2	17.75	1	1	Lichfield	
SHLAA	7	Minster Hall Youth Centre	15	2	2	1	2	1	2	1.5	2	2	2	2	2	2	2.00	2	2	17.50	9	1	Lichfield	
SHLAA	171	Bird Street Car Park, Lichfield	21	2	2	1	2	1	2	1.5	2	2	2	2	2	2	2.00	2	2	17.50	9	1	Lichfield	
SHLAA	323	Davidson Road, St John Street Garage, Lichfield	6	2	2	2	2	1	2	1.75	1	2	2	2	2	2	2.00	2	2	16.75	11	1	Lichfield	
SHLAA	43	The Works, Quonians Lane	74	2	2	2	2	1	2	1.75	2	2	2	2	2	2	2.00	2	1	16.75	11	1	Lichfield	*Site under construction, located in local plan allocations*
SHLAA	48	Depot, Quenn Street, Lichfield	5	2	2	1	2	1	2	1.5	1	2	2	2	2	2	2.00	2	2	16.50	13	1	Lichfield	
SHLAA	429	Swan Road, 7-9	6	2	2	1	2	1	2	1.5	1	2	2	2	2	2	2.00	2	2	16.50	13	1	Lichfield	
SHLAA	232	Swan Road Car Park	7	2	2	1	2	1	2	1.5	1	2	2	2	2	2	2.00	2	2	16.50	13	1	Lichfield	
SHLAA	37	Cross Keys, St Chads House	8	2	2	1	2	1	2	1.5	2	2	2	2	2	2	2.00	2	1	16.50	13	1	Lichfield	
SHLAA	421	St John Street, 20, former Access Bookings ltd	8	2	2	1	2	1	2	1.5	1	2	2	2	2	2	2.00	2	2	16.50	13	1	Lichfield	
SHLAA	46	Beacon Street, Angel Croft Hotel	9	2	2	1	2	1	2	1.5	1	2	2	2	2	2	2.00	2	2	16.50	13	1	Lichfield	*Site under construction, Site allocated in local plan allocations*

Section of Sites	Reference	Name	Housing Yield	Is within 400m of a bus stop which is served by a service with a frequency of 30 minutes or quicker (Mon-Fri) Yes or no (2 or 0)	'Is within 3km to a rail station' (Walk or cycle) Yes or no (2 or 0)	Are they within a 20 minute walk to a primary school within Staffordshire	Are they within a 20 minute cycle to a primary school within Staffordshire	Are they within a 20 minute walk to a secondary school within Staffordshire	Are they within a 20 minute cycle to a secondary school within Staffordshire	Average of 4 Education related calculations	'Are they within a 20 minute walk to a GP'	'Can they access a Hospital within 60mins journey time using public transport'	'Can they access a supermarket within 60mins journey time using public transport'	Are they within a 20 minute walk to a town/city centre?	Are they within a 20 minute cycle to a town/city centre?	Are they within 60 mins journey time using public transport to a town/city centre?	Average of Town/City centre calculations	Are they within a 20 minute walk to a town/city centre OR Key Rural Centre OR Neighbourhood Centre OR a New Local Centre?	Hansen score access to employment Wednesday 07:30-09:30	Total Accessibility Score	Rank	CAST Settlement Area	Commentary	
						No access = 0 0-10 minutes = 2 10-20 minutes = 1	No access = 0 0-10 minutes = 2 10-20 minutes = 1	No access = 0 0-10 minutes = 2 10-20 minutes = 1	No access = 0 0-10 minutes = 2 10-20 minutes = 1		No access = 0 0-10 minutes = 2 10-20 minutes = 1	Wednesday 08:00-10:00 No access/60min + = 0 0-30 = 2 30-60 = 1	Saturday 08:00-10:00 No access/60min + = 0 0-30 = 2 30-60 = 1	No access = 0 0-10 minutes = 2 10-20 minutes = 1	No access = 0 0-10 minutes = 2 10-20 minutes = 1	Wednesday 08:00-09:00 No access = 0 0-30 minutes = 2 30-60 minutes = 1		No access = 0 0-10 minutes = 2 10-20 minutes = 1	No access = 0 Score of 5-13962 = 1 Score of 13962+ = 2					
SHLAA	233	Sandford Street Car Park	9	2	2	1	2	1	2	1.5	1	2	2	2	2	2	2.00	2	2	16.50	13	1 Lichfield		
SHLAA	45	Sandford Street 29, Lichfield	10	2	2	1	2	1	2	1.5	1	2	2	2	2	2	2.00	2	2	16.50	13	1 Lichfield		
SHLAA	393	The Friary, former Lichfield Library	21	2	2	1	2	1	2	1.5	1	2	2	2	2	2	2.00	2	2	16.50	13	1 Lichfield	*Site with full planning permission subject to the signing of section 106 agreement*	
SHLAA	136	Westgate House, Bird Street, Lichfield	30	2	2	1	2	1	2	1.5	1	2	2	2	2	2	2.00	2	2	16.50	13	1 Lichfield	*Site under construction*	
2018	112	Old Library, Bird Street	7	2	2	1	2	1	2	1.5	1	2	2	2	2	2	2.00	2	2	16.50	13	1 Lichfield	No housing yield provided. Assumed yield at 35 houses per 1 hectare of land (Figures rounded up)	
SHLAA	238	Land at Rosaries, off Trent Valley Road	16	2	2	2	2	1	2	1.75	2	2	2	1	2	2	1.67	1	2	16.42	24	1 Lichfield	*Land at the Rosaries, Trent Valley Road (application pending determination)*	
SHLAA	139	Hawthorn House, Burton Old Road, Lichfield	19	2	2	2	2	1	2	1.75	2	2	2	1	2	2	1.67	1	2	16.42	24	1 Lichfield		
SHLAA	382	Chesterfield Road, land adjacent 106 and 112	7	2	2	1	2	1	2	1.5	1	2	2	1	2	2	1.67	2	2	16.17	26	1 Lichfield	*Site with full planning permission*	
SHLAA	1	Lichfield Highway Depot & HWRL Trent Valley Road	43	2	2	1	2	0	2	1.25	1	2	2	1	2	2	1.67	2	2	15.92	27	1 Lichfield		
SHLAA	247	Trent Valley Road, Former GKN Site	72	2	2	2	2	0	2	1.5	1	2	2	0	2	2	1.33	2	2	15.83	28	1 Lichfield		
SHLAA	25	St John's Hospice, Land adjacent to, B'ham Road	18	2	2	1	2	1	2	1.5	1	2	2	2	2	2	2.00	2	1	15.50	29	1 Lichfield		
SHLAA	422	Upper St John Street, 71-73, Management House	8	2	2	2	2	1	2	1.75	1	2	2	1	2	2	1.67	1	2	15.42	30	1 Lichfield		
SHLAA	117	Cherry Orchard, land Off	9	2	2	2	2	1	2	1.75	1	2	2	1	2	2	1.67	1	2	15.42	30	1 Lichfield		
SHLAA	73	Fazeley Saw Mill/ Goulds Timber Yard, Fazeley	20	2	2	2	2	0	1	1.25	2	2	2	0	1	2	1.00	2	1	15.25	32	2 Fazeley		
SHLAA	392	Lichfield Street, Bonehill Mill & 116-122	20	2	2	2	2	0	1	1.25	2	2	2	0	1	2	1.00	2	1	15.25	32	2 Fazeley	*Site with full planning permission*	
SHLAA	89	Tolsons Mill, Lichfield Street, Fazeley	102	2	2	2	2	0	1	1.25	2	2	2	0	1	2	1.00	2	1	15.25	32	2 Fazeley	*Site under constructions. Site allocated in local plan strategy*	
SHLAA	147	Eastern Avenue, Lichfield	11	2	2	1	2	2	2	1.75	2	2	2	0	2	2	1.33	1	1	15.08	35	1 Lichfield		
SHLAA	74	Bonehill Mill, Lichfield Street, Fazeley	23	2	2	1	2	0	1	1	2	2	2	0	1	2	1.00	2	1	15.00	36	2 Fazeley		

Section of Sites	Reference	Name	Housing Yield	Is within 400m of a bus stop which is served by a frequency of 30 minutes or quicker (Mon-Fri) Yes or no (2 or 0)	'Is within 3km to a rail station' (Walk or cycle) Yes or no (2 or 0)	Are they within a 20 minute walk to a primary school within Staffordshire No access = 0 0-10 minutes = 2 10-20 minutes = 1	Are they within a 20 minute cycle to a primary school within Staffordshire No access = 0 0-10 minutes = 2 10-20 minutes = 1	Are they within a 20 minute walk to a secondary school within Staffordshire No access = 0 0-10 minutes = 2 10-20 minutes = 1	Are they within a 20 minute cycle to a secondary school within Staffordshire No access = 0 0-10 minutes = 2 10-20 minutes = 1	Average of 4 Education related calculations	'Are they within a 20 minute walk to a GP' No access = 0 0-10 minutes = 2 10-20 minutes = 1	'Can they access a Hospital within 60mins journey time using public transport' Wednesday 08:00-10:00 No access/60min + = 0 0-30 = 2 30-60 = 1	'Can they access a supermarket within 60mins journey time using public transport' Saturday 08:00-10:00 No access/60min + = 0 0-30 = 2 30-60 = 1	Are they within a 20 minute walk to a town/city centre? No access = 0 0-10 minutes = 2 10-20 minutes = 1	Are they within a 20 minute cycle to a town/city centre? No access = 0 0-10 minutes = 2 10-20 minutes = 1	Are they within 60 mins journey time using public transport to a town/city centre? Wednesday 08:00-09:00 No access = 0 0-30 minutes = 2 30-60 minutes = 1	Average of Town/City centre calculations	Are they within a 20 minute walk to a town/city centre OR Key Rural Centre OR Neighbourhood Centre OR a New Local Centre? No access = 0 0-10 minutes = 2 10-20 minutes = 1	Hansen score access to employment Wednesday 07:30-09:30 No access = 0 Score of 5-13962 = 1 Score of 13962+ = 2	Total Accessibility Score	Rank	CAST Settlement Area	Commentary
SHLAA	111	Land off Dimbles Hill, Lichfield	11	0	2	2	2	2	2	2	2	2	2	1	2	2	1.67	2	1	14.67	37	1 Lichfield	
SHLAA	59	Braeburn Close, Lichfield Day Centre	10	2	2	2	2	1	2	1.75	1	1	2	1	2	2	1.67	1	2	14.42	38	1 Lichfield	
SHLAA	141	Land off Scotch Orchard	27	2	2	2	2	1	2	1.75	1	2	2	1	2	2	1.67	1	1	14.42	38	1 Lichfield	
SHLAA	16	Sandyway Farm, East of,	22	2	2	1	2	0	1	1	0	2	2	0	2	2	1.33	2	2	14.33	40	1 Lichfield	
SHLAA	133	Trent Valley Buffer Depot	55	2	2	2	2	0	0	1	0	2	2	0	2	2	1.33	2	2	14.33	40	1 Lichfield	*Site with full planning permission*
SHLAA	129	Former HSBC Hire, Streethay	72	2	2	2	2	0	0	1	0	2	2	0	2	2	1.33	2	2	14.33	40	1 Lichfield	
SHLAA	428	Land at Woodfield Close, Lichfield Street	8	2	2	2	2	0	1	1.25	2	2	2	0	1	2	1.00	2	0	14.25	43	2 Fazeley	
SHLAA	179	Essington Close, Shires Industrial Estate	39	2	2	1	2	1	2	1.5	1	2	2	1	2	2	1.67	2	0	14.17	44	1 Lichfield	
SHLAA	105	Birmingham Road, Lichfield	26	2	2	2	2	1	2	1.75	0	2	2	0	2	2	1.33	2	1	14.08	45	1 Lichfield	
SHLAA	85	Shortbutts Lane, South of, Lichfield	450	2	2	2	2	1	2	1.75	0	2	2	0	2	2	1.33	2	1	14.08	45	1 Lichfield	*Site under construction, is allocated in Local Plan Strategy*
SHLAA	79	Burton Road, Land off, Streethay	30	2	2	2	2	0	1	1.25	0	2	2	0	2	0	0.67	2	2	13.92	47	1 Lichfield	*Site with full planning permission*
SHLAA	388	Claypit Lane, land north of Deanslade Farm	6	2	2	2	2	0	2	1.5	0	2	2	0	2	2	1.33	2	1	13.83	48	1 Lichfield	*Site with full planning permission*
SHLAA	188	Land north of Fosseyway Lane, Lichfield	12	2	2	2	2	0	2	1.5	0	2	2	0	2	2	1.33	2	1	13.83	48	1 Lichfield	
SHLAA	96	Land north of Fosseyway Lane	21	2	2	2	2	0	2	1.5	0	2	2	0	2	2	1.33	2	1	13.83	48	1 Lichfield	
SHLAA	158	Bridge Cross Garage, Cannock Road, Burntwood	14	2	0	2	2	1	2	1.75	2	1	2	2	2	2	2.00	2	1	13.75	51	1 Burntwood	
SHLAA	253	Olaf Johnson Site	58	2	0	2	2	1	2	1.75	2	1	2	2	2	2	2.00	2	1	13.75	51	1 Burntwood	
SHLAA	87	Working Mens Club, Purcell Avenue	9	0	2	2	2	2	2	2	1	2	2	1	2	2	1.67	2	1	13.67	53	1 Lichfield	
SHLAA	219	Land adj to Working Mens Club, Netherstowe	11	0	2	2	2	2	2	2	1	2	2	1	2	2	1.67	2	1	13.67	53	1 Lichfield	

Section of Sites	Reference	Name	Housing Yield	Is within 400m of a bus stop which is served by a frequency of 30 minutes or quicker (Mon-Fri) Yes or no (2 or 0)	'Is within 3km to a rail station' (Walk or cycle) Yes or no (2 or 0)	Are they within a 20 minute walk to a primary school within Staffordshire	Are they within a 20 minute cycle to a primary school within Staffordshire	Are they within a 20 minute walk to a secondary school within Staffordshire	Are they within a 20 minute cycle to a secondary school within Staffordshire	Average of 4 Education related calculations	'Are they within a 20 minute walk to a GP' No access = 0 0-10 minutes = 2 10-20 minutes = 1	'Can they access a Hospital within 60mins journey time using public transport' Wednesday 08:00-10:00 No access/60min + = 0 0-30 = 2 30-60 = 1	'Can they access a supermarket within 60mins journey time using public transport' Saturday 08:00-10:00 No access/60min + = 0 0-30 = 2 30-60 = 1	Are they within a 20 minute walk to a town/city centre?' No access = 0 0-10 minutes = 2 10-20 minutes = 1	Are they within a 20 minute cycle to a town/city centre?' No access = 0 0-10 minutes = 2 10-20 minutes = 1	Are they within 60 mins journey time using public transport to a town/city centre?' Wednesday 08:00-09:00 No access = 0 0-30 minutes = 2 30-60 minutes = 1	Average of Town/City centre calculations	Are they within a 20 minute walk to a town/city centre OR Key Rural Centre OR Neighbourhood Centre OR a New Local Centre?' No access = 0 0-10 minutes = 2 10-20 minutes = 1	Hansen score access to employment Wednesday 07:30-09:30 No access = 0 Score of 5-13962 = 1 Score of 13962+ = 2	Total Accessibility Score	Rank	CAST Settlement Area	Commentary
SHLAA	3	Greenwood House OPH	17	2	0	1	2	0	2	1.25	2	2	2	0	2	2	1.33	2	1	13.58	55	1 Burntwood	
SHLAA	57	Norton Lane, west of, Burntwood	69	2	0	1	2	0	2	1.25	2	2	2	0	2	2	1.33	2	1	13.58	55	1 Burntwood	
SHLAA	114	Squash Club, Spinney Lane, Burntwood	18	2	0	2	2	1	2	1.75	2	1	2	1	2	2	1.67	2	1	13.42	57	1 Burntwood	
SHLAA	24	Lynn Lane, Shenstone	50	0	2	1	2	0	0	0.75	2	2	2	0	0	2	0.67	2	2	13.42	57	3 Shenstone	"19/00203/001M(not yet determined)" Shenstone sites score well due to access to Shenstone Rail Station, helping with the sites scoring on hospital access and supermarkets. Shenstone also has a GP, primary school and local centre.
SHLAA	380	Birmingham Road, Shire House	18	2	2	1	2	1	2	1.5	1	2	2	1	2	2	1.67	1	0	13.17	59	1 Lichfield	
SHLAA	110	Garage Site, Swan Island, Burntwood	6	2	0	2	2	1	2	1.75	2	2	2	0	2	2	1.33	2	0	13.08	60	1 Burntwood	
SHLAA	146	Grange Lane, Land west of, Lichfield	15	0	2	1	2	2	2	1.75	2	2	2	0	2	2	1.33	1	1	13.08	60	1 Lichfield	
SHLAA	395	Cross in Hand Lane, land rear 2	38	2	2	1	2	2	2	1.75	1	2	2	0	2	2	1.33	0	1	13.08	60	1 Lichfield	
SHLAA	150	14 The Green, Bonehill	7	2	2	1	2	0	1	1	1	2	2	0	1	2	1.00	1	1	13.00	63	2 Fazeley	
SHLAA	5	Maple Close, Burntwood	54	2	0	2	2	2	2	2	2	1	2	2	2	2	2.00	2	0	13.00	63	1 Burntwood	"Site with full planning permission"
SHLAA	119	Birmingham Road, Wyevale Garden Centre, Shenstone	57	2	2	1	2	0	1	1	1	1	2	0	1	2	1.00	1	2	13.00	63	3 Shenstone	Shenstone sites score well due to access to Shenstone Rail Station, helping with the sites scoring on hospital access and supermarkets. Shenstone also has a GP, primary school and local centre.
SHLAA	72	Lichfield Street/ Park Lane, Land off, Mile Oak	62	2	2	1	2	0	1	1	1	2	2	0	1	2	1.00	1	1	13.00	63	2 Fazeley	
SHLAA	414	Land west of Lichfield	1520	2	2	1	2	0	1	1	0	2	2	0	1	2	1.00	1	2	13.00	63	1 Lichfield	
SHLAA	4	East of Birmingham Road, Shenstone	1000	2	2	2	2	0	1	1.25	1	1	2	0	0	2	0.67	2	1	12.92	68	3 Shenstone	Shenstone sites score well due to access to Shenstone Rail Station, helping with the sites scoring on hospital access and supermarkets. Shenstone also has a GP, primary school and local centre.
SHLAA	363	Claypit Lane, land at Deanslade Farm	8	2	2	2	2	0	2	1.5	0	2	2	0	2	2	1.33	2	0	12.83	69	1 Lichfield	"Site with full planning permission"
SHLAA	95	Land north of Fosseyway Lane	36	2	2	2	2	0	2	1.5	0	2	2	0	2	2	1.33	2	0	12.83	69	1 Lichfield	
SHLAA	394	Cedar Road, garage blocks adjacent 61	6	2	0	2	2	2	2	2	1	1	2	1	2	2	1.67	2	1	12.67	71	1 Burntwood	"Site with full planning permission"
SHLAA	162	Land at Stockhay Lane, Hammerwich	41	2	0	1	2	0	2	1.25	2	2	2	0	2	2	1.33	2	0	12.58	72	1 Burntwood	

Section of Sites	Reference	Name	Housing Yield	Is within 400m of a bus stop which is served by a frequency of 30 minutes or quicker (Mon-Fri) Yes or no (2 or 0)	'Is within 3km to a rail station' (Walk or cycle) Yes or no (2 or 0)	Are they within a 20 minute walk to a primary school within Staffordshire	Are they within a 20 minute cycle to a primary school within Staffordshire	Are they within a 20 minute walk to a secondary school within Staffordshire	Are they within a 20 minute cycle to a secondary school within Staffordshire	Average of 4 Education related calculations	'Are they access a Hospital within 60mins journey time using public transport'	'Can they access a Hospital within 60mins journey time using public transport'	'Can they access a supermarket within 60mins journey time using public transport'	Are they within a 20 minute walk to a town/city centre?	Are they within a 20 minute cycle to a town/city centre?	Are they within 60 mins journey time using public transport to a town/city centre?	Average of Town/City centre calculations	Are they within a 20 minute walk to a town/city centre OR Key Rural Centre OR Neighbourhood Centre OR a New Local Centre?	Hansen score access to employment Wednesday 07:30-09:30	Total Accessibility Score	Rank	CAST Settlement Area	Commentary	
						No access = 0 0-10 minutes = 2 10-20 minutes = 1	No access = 0 0-10 minutes = 2 10-20 minutes = 1	No access = 0 0-10 minutes = 2 10-20 minutes = 1	No access = 0 0-10 minutes = 2 10-20 minutes = 1		No access = 0 0-10 minutes = 2 10-20 minutes = 1	Wednesday 08:00-10:00 No access/60min + = 0 0-30 = 2 30-60 = 1	Saturday 08:00-10:00 No access/60min + = 0 0-30 = 2 30-60 = 1	No access = 0 0-10 minutes = 2 10-20 minutes = 1	No access = 0 0-10 minutes = 2 10-20 minutes = 1	Wednesday 08:00-09:00 No access = 0 0-30 minutes = 2 30-60 minutes = 1		No access = 0 0-10 minutes = 2 10-20 minutes = 1	No access = 0 Score of 5-13962 = 1 Score of 13962+ = 2					
SHLAA	142	Cottage of Content PH, Queen Street, Chasetown	10	2	0	2	2	1	2	1.75	2	1	2	1	2	2	1.67	2	0	12.42	73	1 Burntwood		
SHLAA	356	East of Birmingham Road, South East of Shenstone	183	2	2	1	2	0	0	0.75	1	1	2	0	0	2	0.67	1	2	12.42	73	Cast 5	Located alongside X3 bus route and not too far from Shenstone CAST 3 settlement, which has services such as a local centre, GP and Primary school.	
SHLAA	106	Mile Oak, Fazeley	77	2	2	2	2	0	1	1.25	1	2	2	0	1	2	1.00	1	0	12.25	75	2 Fazeley		
SHLAA	231	Colton Mill Industrial Estate	26	0	2	1	2	0	2	1.25	1	2	2	1	2	0	1.00	1	2	12.25	75	Cast 5	Located next to Rugeley Trent Valley Station. Access to Rugeley town centre by footpaths possible. Just outside of CAST 1 settlement of Rugeley.	
2018	123	South of Highfields Primary School	10	2	0	2	2	1	2	1.75	1	1	2	0	2	2	1.33	2	1	12.08	77	Cast 5		
SHLAA	195	Grange Lane, Land at Grange Lea	48	0	2	1	2	2	2	1.75	2	2	2	0	2	2	1.33	0	1	12.08	77	1 Lichfield		
SHLAA	21	Rugeley Road, South of (Part CC District)	12	2	2	2	2	0	2	1.5	1	1	2	0	2	2	1.33	0	1	11.83	79	1 Rugeley		
SHLAA	367	Land of Sandfields Cottage	12	2	2	2	2	0	2	1.5	0	2	2	0	2	2	1.33	1	0	11.83	79	1 Lichfield		
SHLAA	365	Tamworth Road, land south of	28	2	2	1	2	1	2	1.5	0	2	2	0	2	2	1.33	1	0	11.83	79	1 Lichfield		
SHLAA	78	Highfields Road, Land off, Chasetown	250	2	0	1	2	1	2	1.5	2	1	2	0	2	2	1.33	1	1	11.83	79	1 Burntwood		
SHLAA	159	Shenstone Pumping Station, Lynn Lane	100	0	2	1	2	0	0	0.75	2	2	2	0	0	0	0.00	2	1	11.75	83	3 Shenstone	Shenstone sites score well due to access to Shenstone rail station, helping with the sites scoring on hospital access and supermarkets. Shenstone also has a GP, primary school and local centre.	
SHLAA	93	Old Road, Armitage	7	2	0	1	2	0	1	1	2	1	2	0	0	2	0.67	2	1	11.67	84	2 Armitage with Handscare		
SHLAA	210	Land South East of Sandyway Farm, Lichfield	40	2	2	1	2	0	1	1	0	2	2	0	2	0	0.67	2	0	11.67	84	1 Lichfield		
SHLAA	278	Leomansley View, land off	11	2	2	2	2	0	1	1.25	0	2	2	0	2	2	1.33	1	0	11.58	86	1 Lichfield		
SHLAA	14	Land North of Leomansley View	40	2	2	2	2	0	1	1.25	0	2	2	0	2	2	1.33	1	0	11.58	86	1 Lichfield		
SHLAA	230	Tolsons Industrial Estate	70	2	2	2	2	0	1	1.25	2	2	0	0	1	0	0.33	2	0	11.58	86	2 Fazeley		
SHLAA	81	Cross in Hand Lane	39	2	2	0	2	1	2	1.25	1	2	2	0	2	2	1.33	0	0	11.58	86	Cast 5	Just outside CAST 1 settlement of Lichfield (near to Hedgehog Pub). Located on bus route 828, close to Friary Secondary school.	
SHLAA	180	Grange Road Garage Court	12	2	0	2	2	1	2	1.75	1	1	2	1	2	2	1.67	1	1	11.42	90	1 Burntwood		

Section of Sites	Reference	Name	Housing Yield	Is within 400m of a bus stop which is served by a service with a frequency of 30 minutes or quicker (Mon-Fri) Yes or no (2 or 0)	'Is within 3km to a rail station' (Walk or cycle) Yes or no (2 or 0)	Are they within a 20 minute walk to a primary school within Staffordshire	Are they within a 20 minute cycle to a primary school within Staffordshire	Are they within a 20 minute walk to a secondary school within Staffordshire	Are they within a 20 minute cycle to a secondary school within Staffordshire	Average of 4 Education related calculations	'Are they within a 20 minute walk to a GP' No access = 0 0-10 minutes = 2 10-20 minutes = 1	'Can they access a Hospital within 60mins journey time using public transport' Wednesday 08:00-10:00 No access/60min + = 0 0-30 = 2 30-60 = 1	'Can they access a supermarket within 60mins journey time using public transport' Saturday 08:00-10:00 No access/60min + = 0 0-30 = 2 30-60 = 1	Are they within a 20 minute walk to a town/city centre?' No access = 0 0-10 minutes = 2 10-20 minutes = 1	Are they within a 20 minute cycle to a town/city centre?' No access = 0 0-10 minutes = 2 10-20 minutes = 1	Are they within 60 mins journey time using public transport to a town/city centre?' Wednesday 08:00-09:00 No access = 0 0-30 minutes = 2 30-60 minutes = 1	Average of Town/City centre calculations	Are they within a 20 minute walk to a town/city centre OR Key Rural Centre OR Neighbourhood Centre OR a New Local Centre?' No access = 0 0-10 minutes = 2 10-20 minutes = 1	Hansen score access to employment Wednesday 07:30-09:30 No access = 0 Score of 5-13962 = 1 Score of 13962+ = 2	Total Accessibility Score	Rank	CAST Settlement Area	Commentary
SHLAA	86	Meadowbrook Road, Lichfield, Staffordshire	17	0	2	2	2	1	2	1.75	1	1	2	0	2	0	0.67	2	1	11.42	90	1 Lichfield	
SHLAA	9	The Abbatoir, Eastgate Street, Chase Terrace	18	2	0	2	2	1	2	1.75	1	1	2	1	2	2	1.67	1	1	11.42	90	1 Burntwood	
SHLAA	211	Land south of Court Drive, Shenstone	54	2	2	1	2	0	0	0.75	1	1	2	0	0	2	0.67	1	1	11.42	90	Cast 5	This site spans CAST 3 and CAST 5, with the centroid point falling in CAST 5. Site is in close proximity to Shenstone which has facilities such as a rail station, GP, local centre and Primary school.
SHLAA	134	Sandyway Farm	12	2	2	1	2	0	1	1	0	2	2	0	2	2	1.33	1	0	11.33	94	1 Lichfield	
2018	132	Boothouse Lane, Armitage	1	2	0	2	2	0	1	1.25	2	1	2	0	1	2	1.00	1	1	11.25	95	4 Alrewas	
SHLAA	208	land east of Stafford Road, Lichfield	106	2	2	0	2	1	2	1.25	1	2	2	0	1	2	1.00	0	0	11.25	95	1 Lichfield	
SHLAA	178	Mount Road Industrial Estate	255	2	0	1	2	1	2	1.5	1	1	2	1	2	2	1.67	1	1	11.17	97	1 Burntwood	
SHLAA	92	Land off New Road, Armitage Shanks, Armitage	46	2	0	1	2	0	1	1	2	1	2	0	1	2	1.00	2	0	11.00	98	2 Armitage with Handscare	
SHLAA	71	Aldin Close/Plantation Ln, Land off, Mile Oak	198	2	2	1	2	0	1	1	1	2	2	0	1	2	1.00	0	0	11.00	98	2 Fazeley	
SHLAA	17	land at hilltop grange	250	2	2	1	2	0	1	1	0	2	2	0	1	2	1.00	1	0	11.00	98	1 Lichfield	
SHLAA	161	Farewell Lane, Burntwood	284	2	0	1	2	0	1	1	1	2	2	0	1	2	1.00	1	1	11.00	98	1 Burntwood	
SHLAA	26	Cricket Lane, Lichfield	520	2	2	1	1	1	1	1	0	2	2	0	1	2	1.00	1	0	11.00	98	1 Lichfield	"Site with outline planning permission"
2018	20	Burton Road, East of Streethat	11	2	2	1	2	0	1	1	0	2	2	0	1	2	1.00	1	0	11.00	98	Cast 5	No housing yield provided. Assumed yield at 35 houses per 1 hectare of land (Figures rounded up)
SHLAA	304	Birmingham Rd., Land West of, Shenstone Woodend	250	2	2	0	1	0	0	0.25	0	1	2	0	0	2	0.67	1	2	10.92	104	2 Little Aston	
SHLAA	306	Land north of Watford Gap, Shenstone Woodend	85	2	2	0	1	0	0	0.25	0	1	2	0	0	2	0.67	1	2	10.92	104	Cast 5	Site has access to X3 bus route, and close to type 2 CAST Little Aston and also Blake Street rail station.
SHLAA	396	Ashcroft Lane, land at 2	5	0	2	1	2	0	0	0.75	1	2	2	0	0	0	0.00	2	1	10.75	106	3 Shenstone	Shenstone sites score well due to access to Shenstone rail station, helping with the sites scoring on hospital access and supermarkets. Shenstone also has a GP, primary school and local centre.
SHLAA	12	Shingle Cottage, South of, Abnalls Lane	19	2	2	1	2	1	2	1.5	1	2	0	1	2	0	1.00	1	0	10.50	107	1 Lichfield	
SHLAA	198	land north of Rugeley Road, Armitage	36	2	0	2	2	0	2	1.5	1	1	2	0	1	2	1.00	1	1	10.50	107	1 Rugeley	

Section of Sites	Reference	Name	Housing Yield	Is within 400m of a bus stop which is served by a frequency of 30 minutes or quicker (Mon-Fri) Yes or no (2 or 0)	'Is within 3km to a rail station' (Walk or cycle) Yes or no (2 or 0)	Are they within a 20 minute walk to a primary school within Staffordshire No access = 0 0-10 minutes = 2 10-20 minutes = 1	Are they within a 20 minute cycle to a primary school within Staffordshire No access = 0 0-10 minutes = 2 10-20 minutes = 1	Are they within a 20 minute walk to a secondary school within Staffordshire No access = 0 0-10 minutes = 2 10-20 minutes = 1	Are they within a 20 minute cycle to a secondary school within Staffordshire No access = 0 0-10 minutes = 2 10-20 minutes = 1	Average of 4 Education related calculations	'Are they within a 20 minute walk to a GP' No access = 0 0-10 minutes = 2 10-20 minutes = 1	'Can they access a Hospital within 60mins journey time using public transport' Wednesday 08:00-10:00 No access/60min + = 0 0-30 = 2 30-60 = 1	'Can they access a supermarket within 60mins journey time using public transport' Saturday 08:00-10:00 No access/60min + = 0 0-30 = 2 30-60 = 1	Are they within a 20 minute walk to a town/city centre?' No access = 0 0-10 minutes = 2 10-20 minutes = 1	Are they within a 20 minute cycle to a town/city centre?' No access = 0 0-10 minutes = 2 10-20 minutes = 1	Are they within 60 mins journey time using public transport to a town/city centre?' Wednesday 08:00-09:00 No access = 0 0-30 minutes = 2 30-60 minutes = 1	Average of Town/City centre calculations	Are they within a 20 minute walk to a town/city centre OR Key Rural Centre OR Neighbourhood Centre OR a New Local Centre?' No access = 0 0-10 minutes = 2 10-20 minutes = 1	Hansen score access to employment Wednesday 07:30-09:30 No access = 0 Score of 5-13962 = 1 Score of 13962+ = 2	Total Accessibility Score	Rank	CAST Settlement Area	Commentary
SHLAA	289	A513/A51 East of Rugeley Power Station	50	2	2	2	2	0	2	1.5	1	1	2	0	1	2	1.00	0	0	10.50	107	1 Rugeley	
SHLAA	234	Queens Drive Industrial Estate	48	2	0	2	2	1	2	1.75	1	1	2	1	2	2	1.67	1	0	10.42	110	1 Burntwood	
SHLAA	53	Court Drive Land Off, Shenstone	73	2	2	1	2	0	0	0.75	1	1	2	0	0	2	0.67	1	0	10.42	110	3 Shenstone	Shenstone sites score well due to access to Shenstone rail station, helping with the sites scoring on hospital access and supermarkets. Shenstone also has a GP, primary school and local centre.
SHLAA	10	Aldridge Road 22, Land Adjacent to, Little Aston	20	2	2	2	2	0	0	1	0	1	2	0	0	1	0.33	1	1	10.33	112	2 Little Aston	
SHLAA	77	Cloisters Walk, Whittington	8	0	0	2	2	0	1	1.25	2	1	2	0	1	2	1.00	2	1	10.25	113	4 Whittington	Despite being located in a CAST 4 settlement this site has access to GP, Primary School, Local Centre and is within 20 min cycle to Lichfield
SHLAA	296	Common Lane, West of, Whittington	10	0	0	2	2	0	1	1.25	2	1	2	0	1	2	1.00	2	1	10.25	113	4 Whittington	Despite being located in a CAST 4 settlement this site has access to GP, Primary School, Local Centre and is within 20 min cycle to Lichfield
SHLAA	127	Church Farm, Armitage	21	2	0	2	2	0	1	1.25	1	1	2	0	1	2	1.00	1	1	10.25	113	1 Rugeley	
SHLAA	245	Armitage Road, land off, Hawkesyard (2)	66	2	2	1	2	0	2	1.25	1	1	2	0	1	2	1.00	0	0	10.25	113	1 Rugeley	
2018	55	South of Church Street	4	0	0	2	2	0	1	1.25	2	1	2	0	1	2	1.00	2	1	10.25	113	Cast 5	No housing yield provided. Assumed yield at 35 houses per 1 hectare of land (Figures rounded up). Despite being located in a CAST 4 settlement this site has access to GP, Primary School, Local Centre and is within 20 min cycle to Lichfield.
SHLAA	404	land south of Cannock Road	14	2	0	1	2	1	2	1.5	1	1	2	1	2	2	1.67	1	0	10.17	118	1 Burntwood	
SHLAA	412	Land at Netherstowe Lane, Lichfield	15	0	2	1	2	1	2	1.5	1	1	2	0	2	0	0.67	2	0	10.17	118	1 Lichfield	
SHLAA	279	Stables Way, land west	149	2	0	1	2	1	2	1.5	1	1	2	1	2	2	1.67	1	0	10.17	118	1 Burntwood	
SHLAA	261	Blake Street, Cottage Farm, land adj	47	2	2	1	2	0	0	0.75	0	1	2	0	0	1	0.33	2	0	10.08	121	2 Little Aston	
SHLAA	205	Land north of Little Aston Lane	84	2	2	1	2	0	0	0.75	0	1	2	0	0	1	0.33	2	0	10.08	121	2 Little Aston	
SHLAA	379	Rectory Lane, 19	6	2	0	1	2	0	1	1	2	1	2	0	1	2	1.00	1	0	10.00	123	2 Armitage with Handscare	
SHLAA	237	Land north of Shenstone	16	2	2	1	2	0	1	1	2	1	0	0	0	0	0.00	2	0	10.00	123	3 Shenstone	Shenstone sites score well due to access to Shenstone rail station, helping with the sites scoring on hospital access and supermarkets. Shenstone also has a GP, primary school and local centre.
SHLAA	273	Back Lane, Church Farm, land at	38	0	0	1	2	0	1	1	2	1	2	0	1	2	1.00	2	1	10.00	123	4 Whittington	Despite being located in a CAST 4 settlement this site has access to GP, Primary School, Local Centre and is within 20 min cycle to Lichfield
SHLAA	226	Land at Common Lane	19	0	0	2	2	0	1	1.25	2	1	2	0	1	1	0.67	2	1	9.92	126	4 Whittington	Despite being located in a CAST 4 settlement this site has access to GP, Primary School, Local Centre and is within 20 min cycle to Lichfield

Section of Sites	Reference	Name	Housing Yield	Is within 400m of a bus stop which is served by a frequency of 30 minutes or quicker (Mon-Fri)' Yes or no (2 or 0)	'Is within 3km to a rail station' (Walk or cycle) Yes or no (2 or 0)	Are they within a 20 minute walk to a primary school within Staffordshire No access = 0 0-10 minutes = 2 10-20 minutes = 1	Are they within a 20 minute cycle to a primary school within Staffordshire No access = 0 0-10 minutes = 2 10-20 minutes = 1	Are they within a 20 minute walk to a secondary school within Staffordshire No access = 0 0-10 minutes = 2 10-20 minutes = 1	Are they within a 20 minute cycle to a secondary school within Staffordshire No access = 0 0-10 minutes = 2 10-20 minutes = 1	Average of 4 Education related calculations	'Are they within a 20 minute walk to a GP' No access = 0 0-10 minutes = 2 10-20 minutes = 1	'Can they access a Hospital within 60mins Journey time using public transport' Wednesday 08:00-10:00 Saturday 08:00-10:00 No access/60min + = 0 0-30 = 2 30-60 = 1	'Can they access a supermarket within 60mins Journey time using public transport' Saturday 08:00-10:00 No access/60min + = 0 0-30 = 2 30-60 = 1	Are they within a 20 minute walk to a town/city centre?' No access = 0 0-10 minutes = 2 10-20 minutes = 1	Are they within a 20 minute cycle to a town/city centre?' No access = 0 0-10 minutes = 2 10-20 minutes = 1	Are they within 60 mins Journey time using public transport to a town/city centre?' Wednesday 08:00-09:00 No access = 0 0-30 minutes = 2 30-60 minutes = 1	Average of Town/City centre calculations	Are they within a 20 minute walk to a town/city centre OR Key Rural Centre OR Neighbourhood Centre OR a New Local Centre?' No access = 0 0-10 minutes = 2 10-20 minutes = 1	Hansen score access to employment Wednesday 07:30-09:30 No access = 0 Score of 5-13962 = 1 Score of 13962+ = 2	Total Accessibility Score	Rank	CAST Settlement Area	Commentary
SHLAA	143	Common Lane, Land West of, Whittinton	29	0	0	2	2	0	1	1.25	2	1	2	0	1	1	0.67	2	1	9.92	126	4 Whittington	Despite being located in a CAST 4 settlement this site has access to GP, Primary School, Local Centre and is within 20 min cycle to Lichfield
SHLAA	305	Smarts Ave, Land North of, Shenstone Woodend	60	2	2	0	1	0	0	0.25	0	1	2	0	0	2	0.67	0	2	9.92	126	Cast 5	Site has access to X3 bus route, and close to type 2 CAST Little Aston and also Blake Street rail station.
SHLAA	23	Land north of Blake Street	120	2	2	0	1	0	0	0.25	0	2	2	0	0	2	0.67	1	0	9.92	129	2 Little Aston	
SHLAA	177	Shenstone Employment Area	121	0	2	1	2	0	0	0.75	1	2	2	0	0	0	0.00	1	1	9.75	130	3 Shenstone	Shenstone sites score well due to access to Shenstone rail station, helping with the sites scoring on hospital access and supermarkets. Shenstone also has a GP, primary school and local centre.
SHLAA	423	Browns Lane, land north of	210	2	2	2	2	1	2	1.75	0	1	2	0	1	2	1.00	0	0	9.75	130	Cast 5	"Planning permission"
SHLAA	291	Uttoxeter Rd, (A513) Land adj Crown, handsacre	55	2	0	1	2	0	1	1	1	1	2	0	0	2	0.67	2	0	9.67	132	2 Armitage with Handsacre	
SHLAA	115	Huddlesford Lane, Whittington	80	0	0	1	2	0	1	1	2	1	2	0	1	1	0.67	2	1	9.67	132	4 Whittington	Despite being located in a CAST 4 settlement this site has access to GP, Primary School, Local Centre and is within 20 min cycle to Lichfield
SHLAA	286	Land west of Lichfield Road, Handsacre	289	2	0	1	2	0	1	1	1	1	2	0	0	2	0.67	1	1	9.67	132	2 Armitage with Handsacre	
SHLAA	103	Land off Walsall Road, Little Aston	80	2	2	2	2	0	0	1	0	1	2	0	0	1	0.33	1	0	9.33	135	2 Little Aston	
SHLAA	229	Chapel lane/Blacksmith lane	10	0	0	2	2	0	1	1.25	2	0	2	0	1	2	1.00	2	1	9.25	136	4 Whittington	Despite being located in a CAST 4 settlement this site has access to GP, Primary School, Local Centre and is within 20 min cycle to Lichfield
SHLAA	256	Nursery Lane, land off, Hopwas	14	2	0	2	2	0	1	1.25	0	2	2	0	1	2	1.00	0	1	9.25	136	2 Hopwas	
SHLAA	13	Lichfield Christ Church Primary School, North of	17	2	2	2	2	0	1	1.25	0	2	0	1	2	0	1.00	1	0	9.25	136	1 Lichfield	
SHLAA	371	Land at The Bungalow, Bonehill Road, Mile Oak	30	2	0	2	2	0	1	1.25	0	2	2	0	1	2	1.00	0	1	9.25	136	2 Fazeley	
SHLAA	244	Armitage Road, land off, Hawkesyard (1)	33	2	0	1	2	0	2	1.25	1	1	2	0	1	2	1.00	0	1	9.25	136	1 Rugeley	
SHLAA	330	Plantation Lane, Sir Robert Peel Hospital	73	2	0	2	2	0	1	1.25	0	2	2	0	1	2	1.00	0	1	9.25	136	2 Fazeley	
SHLAA	173	Land West of Sir Robert Peel Hospital, Mile Oak	76	2	0	2	2	0	1	1.25	0	2	2	0	1	2	1.00	0	1	9.25	136	2 Fazeley	
SHLAA	193	Land south of Aldridge Road	167	2	2	1	2	0	0	0.75	0	1	2	0	0	1	0.33	1	0	9.08	143	2 Little Aston	
2018	19	Fox Lane, Alrewas	4	0	0	2	2	0	0	1	1	2	2	0	0	0	0.00	2	1	9.00	144	Cast 5	

Section of Sites	Reference	Name	Housing Yield	Is within 400m of a bus stop which is served by a frequency of 30 minutes or quicker (Mon-Fri) (Yes or no (2 or 0))	'Is within 3km to a rail station' (Walk or cycle) (Yes or no (2 or 0))	Are they within a 20 minute walk to a primary school within Staffordshire	Are they within a 20 minute cycle to a primary school within Staffordshire	Are they within a 20 minute walk to a secondary school within Staffordshire	Are they within a 20 minute cycle to a secondary school within Staffordshire	Average of 4 Education related calculations	'Are they within a 20 minute walk to a GP' No access = 0 0-10 minutes = 2 10-20 minutes = 1	'Can they access a Hospital within 60mins journey time using public transport' Wednesday 08:00-10:00 No access/60min + = 0 0-30 = 2 30-60 = 1	'Can they access a supermarket within 60mins journey time using public transport' Saturday 08:00-10:00 No access/60min + = 0 0-30 = 2 30-60 = 1	Are they within a 20 minute walk to a town/city centre? No access = 0 0-10 minutes = 2 10-20 minutes = 1	Are they within a 20 minute cycle to a town/city centre? No access = 0 0-10 minutes = 2 10-20 minutes = 1	Are they within 60 mins journey time using public transport to a town/city centre? Wednesday 08:00-09:00 No access = 0 0-30 minutes = 2 30-60 minutes = 1	Average of Town/City centre calculations	Are they within a 20 minute walk to a town/city centre OR Key Rural Centre OR Neighbourhood Centre OR a New Local Centre? No access = 0 0-10 minutes = 2 10-20 minutes = 1	Hansen score access to employment Wednesday 07:30-09:30 No access = 0 Score of 5-13962 = 1 Score of 13962+ = 2	Total Accessibility Score	Rank	CAST Settlement Area	Commentary
SHLAA	333	Old Hall Lane, Old Hall Farm, Fradley	5	2	0	2	2	0	0	1	0	2	2	0	0	0	0.00	1	1	9.00	144	4 Fradley	*Site with full planning permission*
SHLAA	149	Common Lane, West of, Fradley	8	2	0	2	2	0	0	1	0	2	2	0	0	0	0.00	1	1	9.00	144	4 Fradley	*Site with full planning permission. Site allocated in local plan strategy*
SHLAA	337	Dark Lane, North of Alrewas	19	0	0	2	2	0	0	1	2	2	2	0	0	0	0.00	2	0	9.00	144	4 Alrewas	
SHLAA	252	Fradley SDA, Fradley Park	590	2	0	2	2	0	0	1	0	1	2	0	0	0	0.00	2	1	9.00	144	4 Fradley	*Site under constructions. Site allocated in local plan strategy*
SHLAA	80	Arkall Farm, Tamworth	1000	2	2	1	2	0	1	1	0	1	2	0	1	2	1.00	0	0	9.00	144	Cast 5	*Site under constructions. Site allocated in local plan*
SHLAA	347	Stychbrook Farm, Eastern Avenue, Lichfield	104	0	2	1	2	1	2	1.5	1	0	2	0	1	0	0.33	1	1	8.83	150	Cast 5	Located just outside of CAST 1 Lichfield Boundary so benefits from many CAST 1 type services and facilities
SHLAA	166	Most Lea Farm, Meg Lane, Burntwood	9	0	0	1	2	1	2	1.5	2	0	2	1	2	0	1.00	2	0	8.50	151	1 Burntwood	
SHLAA	288	Lichfield Rd., East of, Handsacre	122	2	0	1	1	0	1	0.75	1	1	2	0	0	2	0.67	1	0	8.42	152	Cast 5	Located next to CAST 2 Settlement of Armitage and adjacent to bus service 828.
SHLAA	98	Tamworth Road, Packington Hall Farm	2992	2	0	0	2	0	1	0.75	0	2	2	0	0	2	0.67	0	1	8.42	152	Cast 5	This is a new settlement, located in a CAST 5 area. Bus service X65 is located nearby on the A51 (current stops 'Botnay Farm') and currently scores better than other proposed new settlements. Other mitigation will need to be considered if site is allocated.
SHLAA	213	Stockhay Lane, land rear 37	38	2	0	1	2	0	1	1	2	2	0	0	1	0	0.33	1	0	8.33	154	1 Burntwood	
SHLAA	107	Land north east of Bassetts Pole	178	2	0	0	1	0	0	0.25	0	2	2	0	1	2	1.00	0	1	8.25	155	Cast 5	This site is located in a CAST 5 area but benefits from the 15 min frequency bus service 110 (Tamworth/Sutton/Birmingham)
SHLAA	427	Former nursery, Nursery Lane, Hopwas	9	2	0	2	2	0	1	1.25	0	2	2	0	1	2	1.00	0	0	8.25	155	2 Hopwas	
SHLAA	284	Chorley Road, Land North of, Boney Hay, Burntwood	50	0	0	1	2	0	2	1.25	1	1	2	1	2	0	1.00	1	1	8.25	155	1 Burntwood	
SHLAA	294	Plantation Lane, Land Off, Hopwas	56	2	0	2	2	0	1	1.25	0	2	2	0	1	2	1.00	0	0	8.25	155	2 Hopwas	
SHLAA	339	Land east of Abnalls Lane, Lichfield	383	2	2	1	2	1	2	1.5	0	2	0	0	2	0	0.67	0	0	8.17	159	1 Lichfield	
SHLAA	418	Land north of Hints Road	44	2	0	1	2	0	1	1	0	2	2	0	1	2	1.00	0	0	8.00	160	2 Fazeley	
SHLAA	152	Land west of Sutton Road, Mile Oak	280	2	0	1	2	0	1	1	0	2	2	0	1	2	1.00	0	0	8.00	160	2 Fazeley	
SHLAA	155	Church Road & Church Lane, Stonnall	20	0	0	2	2	0	0	1	2	1	2	0	0	0	0.00	0	2	8.00	160	Cast 5	CAST 5 location but has access to a GP surgery, bus service (60min+), Primary School, and is close to Walsall (employment)

Section of Sites	Reference	Name	Housing Yield	Is within 400m of a bus stop which is served by a service with a frequency of 30 minutes or quicker (Mon-Fri) Yes or no (2 or 0)	'Is within 3km to a rail station' (Walk or cycle) Yes or no (2 or 0)	Are they within a 20 minute walk to a primary school within Staffordshire No access = 0 0-10 minutes = 2 10-20 minutes = 1	Are they within a 20 minute cycle to a primary school within Staffordshire No access = 0 0-10 minutes = 2 10-20 minutes = 1	Are they within a 20 minute walk to a secondary school within Staffordshire No access = 0 0-10 minutes = 2 10-20 minutes = 1	Are they within a 20 minute cycle to a secondary school within Staffordshire No access = 0 0-10 minutes = 2 10-20 minutes = 1	Average of 4 Education related calculations	'Are they within a 20 minute walk to a GP' No access = 0 0-10 minutes = 2 10-20 minutes = 1	'Can they access a Hospital within 60mins journey time using public transport' Wednesday 08:00-10:00 No access/60min + = 0 0-30 = 2 30-60 = 1	'Can they access a supermarket within 60mins journey time using public transport' Saturday 08:00-10:00 No access/60min + = 0 0-30 = 2 30-60 = 1	Are they within a 20 minute walk to a town/city centre? No access = 0 0-10 minutes = 2 10-20 minutes = 1	Are they within a 20 minute cycle to a town/city centre? No access = 0 0-10 minutes = 2 10-20 minutes = 1	Are they within 60 mins journey time using public transport to a town/city centre? Wednesday 08:00-09:00 No access = 0 0-30 minutes = 2 30-60 minutes = 1	Average of Town/City centre calculations	Are they within a 20 minute walk to a town/city centre OR Key Rural Centre OR Neighbourhood Centre OR a New Local Centre? No access = 0 0-10 minutes = 2 10-20 minutes = 1	Hansen score access to employment Wednesday 07:30-09:30 No access = 0 Score of 5-13962 = 1 Score of 13962+ = 2	Total Accessibility Score	Rank	CAST Settlement Area	Commentary
SHLAA	374	Land south of Fotherley Lane	171	2	2	0	1	0	0	0.25	0	1	2	0	0	2	0.67	0	0	7.92	163	Cast 5	Site has access to X3 bus route, and close to type 2 CAST Little Aston and also Blake Street rail station.
SHLAA	372	Land at 117 Norton Lane	8	2	0	1	2	0	2	1.25	1	1	0	0	2	0	0.67	2	0	7.92	163	1 Burntwood	
SHLAA	340	Land north of Walsall Road, Lichfield	356	2	2	2	2	0	1	1.25	0	1	0	0	2	0	0.67	1	0	7.92	163	1 Lichfield	
SHLAA	194	Chester Road, Porsche Garage	6	2	0	0	2	0	0	0.5	0	1	2	0	0	1	0.33	0	2	7.83	166	Cast 5	Located next to CAST 2 Little Aston - along bus route 6 (Walsall to Sutton, every 30 mins)
SHLAA	408	Land opposite Irish Harp, Chester Road	17	2	0	0	2	0	0	0.5	0	1	2	0	0	1	0.33	0	2	7.83	166	Cast 5	Located next to CAST 2 Little Aston - along bus route 6 (Walsall to Sutton, every 30 mins)
SHLAA	313	Hay End Ln. land to south of, Fradley	38	2	0	1	2	0	0	0.75	0	1	2	0	0	0	0.00	1	1	7.75	168	4 Fradley	
SHLAA	99	South Fradley	95	2	0	1	2	0	0	0.75	0	2	2	0	0	0	0.00	1	0	7.75	168	4 Fradley	*22/00106/FULM – application not yet determined. Previous application refused*
SHLAA	137	Land rear public house, Stonnall	12	0	0	1	2	0	0	0.75	2	1	2	0	0	0	0.00	0	2	7.75	168	Cast 5	CAST 5 location but has access to a GP surgery, bus service (60min+), Primary School, and is close to Walsall (employment)
SHLAA	131	Rugeley Borrow Pit, Power Station	264	2	0	1	2	1	2	1.5	0	1	2	0	1	2	1.00	0	0	7.50	171	1 Rugeley	
SHLAA	70	Brick Kiln Farm, Land at, Armitage with Handsacre	108	2	0	1	2	0	1	1	2	1	0	0	1	0	0.33	1	0	7.33	172	2 Armitage with Handsacre	
SHLAA	251	Carroway Head Hill, land off A453	75	2	0	0	1	0	0	0.25	0	2	2	0	1	2	1.00	0	0	7.25	173	Cast 5	This site is located in a CAST 5 area but benefits from the 15 min frequency bus service 110 (Tamworth/Sutton/Birmingham)
SHLAA	186	Land East of Brownhills Road	29	0	0	1	2	0	2	1.25	1	1	2	0	1	2	1.00	0	1	7.25	173	1 Burntwood	
SHLAA	216	Land at Highfields House Farm, Burntwood	263	2	0	0	1	1	1	0.75	1	1	2	0	1	0	0.33	0	0	7.08	175	1 Burntwood	
SHLAA	370	Land north of Coton Lane	300	2	2	1	2	2	2	1.75	0	1	0	0	1	0	0.33	0	0	7.08	175	Cast 5	On the edge of CAST 1 settlement of Tamworth. Known capacity constraints on the highway network in North of Tamworth and limited sustainable transport options which are difficult to solve. Lack of local facilities available to serve housing in this area.
SHLAA	11	Bassetts Pole	26	2	0	0	0	0	0	0	0	2	2	0	1	2	1.00	0	0	7.00	177	Cast 5	This site is located in a CAST 5 area but benefits from the 15 min frequency bus service 110 (Tamworth/Sutton/Birmingham)
SHLAA	430	Land south of Rugeley Road (2)	261	2	0	1	2	0	1	1	0	1	2	0	1	2	1.00	0	0	7.00	177	1 Rugeley	
SHLAA	154	Thomes House, Stonnall	39	0	0	2	2	0	0	1	2	1	2	0	0	0	0.00	0	1	7.00	177	Cast 5	CAST 5 location but has access to a GP surgery, bus service (60min+), Primary School, and is close to Walsall (employment)
SHLAA	153	Cartersfield Lane, Land East of, Stonnall	62	0	0	2	2	0	0	1	2	1	2	0	0	0	0.00	0	1	7.00	177	Cast 5	CAST 5 location but has access to a GP surgery, bus service (60min+), Primary School, and is close to Walsall (employment)

Section of Sites	Reference	Name	Housing Yield	Is within 400m of a bus stop which is served by a service with a frequency of 30 minutes or quicker (Mon-Fri) Yes or no (2 or 0)	'Is within 3km to a rail station' (Walk or cycle) Yes or no (2 or 0)	Are they within a 20 minute walk to a primary school within Staffordshire	Are they within a 20 minute cycle to a primary school within Staffordshire	Are they within a 20 minute walk to a secondary school within Staffordshire	Are they within a 20 minute cycle to a secondary school within Staffordshire	Average of 4 Education related calculations	'Are they within a 20 minute walk to a GP'	'Can they access a Hospital within 60mins journey time using public transport'	'Can they access a supermarket within 60mins journey time using public transport'	Are they within a 20 minute walk to a town/city centre?	Are they within a 20 minute cycle to a town/city centre?	Are they within 60 mins journey time using public transport to a town/city centre?	Average of Town/City centre calculations	Are they within a 20 minute walk to a town/city centre OR Key Rural Centre OR Neighbourhood Centre OR a New Local Centre?	Hansen score access to employment Wednesday 07:30-09:30	Total Accessibility Score	Rank	CAST Settlement Area	Commentary	
						No access = 0 0-10 minutes = 2 10-20 minutes = 1	No access = 0 0-10 minutes = 2 10-20 minutes = 1	No access = 0 0-10 minutes = 2 10-20 minutes = 1	No access = 0 0-10 minutes = 2 10-20 minutes = 1		No access = 0 0-10 minutes = 2 10-20 minutes = 1	Wednesday 08:00-10:00 No access/60min + = 0 0-30 = 2 30-60 = 1	Saturday 08:00-10:00 No access/60min + = 0 0-30 = 2 30-60 = 1	No access = 0 0-10 minutes = 2 10-20 minutes = 1	No access = 0 0-10 minutes = 2 10-20 minutes = 1	No access = 0 0-30 minutes = 2 30-60 minutes = 1		No access = 0 0-10 minutes = 2 10-20 minutes = 1	No access = 0 Score of 5-13962 = 1 Score of 13962+ = 2					
SHLAA	402	Land south of 117 Norton Lane (larger site)	29	2	0	1	2	0	2	1.25	1	1	0	0	2	0	0.67	1	0	6.92	181	1 Burntwood	Despite being located in CAST 1 Burntwood this site has limited access to services and facilities, as well as no public transport access.	
SHLAA	266	Land off Fossey Lane	480	0	2	2	2	0	2	1.5	0	2	0	0	1	0	0.33	1	0	6.83	182	1 Lichfield		
SHLAA	176	North of Gillway Lane	227	2	2	1	2	1	2	1.5	0	1	0	0	1	0	0.33	0	0	6.83	182	Cast 5	On the edge of CAST 1 settlement of Tamworth. Known capacity constraints on the highway network in North of Tamworth and limited sustainable transport options which are difficult to solve. Lack of local facilities available to serve housing in this area.	
SHLAA	342	West of Mill End Lane, Alrewas	17	0	0	1	2	0	0	0.75	1	2	2	0	0	0	0.00	1	0	6.75	184	4 Alrewas		
SHLAA	275	Lynn Lane, land off, Shenstone	86	0	2	1	2	0	0	0.75	1	0	2	0	0	0	0.00	1	0	6.75	184	3 Shenstone		
SHLAA	148	Hay End Lane, Fradley	184	2	0	1	2	0	0	0.75	0	1	2	0	0	0	0.00	1	0	6.75	184	4 Fradley	*Site with outline planning permission*	
SHLAA	156	Church Road, East of, Stonnall	52	0	0	1	2	0	0	0.75	2	1	2	0	0	0	0.00	0	1	6.75	184	Cast 5	CAST 5 location but has access to a GP surgery, bus service (60min+), Primary School, and is close to Walsall (employment)	
SHLAA	287	Colton Rd., Station Works, Rugeley	14	0	2	1	2	0	1	1	1	2	0	0	2	0	0.67	0	0	6.67	188	Cast 5	Located next to Rugeley Trent Valley Station. Just outside of CAST 1 settlement of Rugeley.	
SHLAA	405	Land south of Rectory Lane, Armitage	59	2	0	2	2	0	1	1.25	1	1	0	0	1	0	0.33	1	0	6.58	189	2 Armitage with Handsacre		
SHLAA	349	Land north of M6 Toll	169	2	0	1	1	1	2	1.25	1	1	0	0	1	0	0.33	1	0	6.58	189	1 Burntwood		
SHLAA	185	Land to the South of Rugeley Road, Armitage	277	2	0	2	2	0	1	1.25	1	1	0	0	1	0	0.33	1	0	6.58	189	2 Armitage with Handsacre		
SHLAA	270	Chorley Road, Boney Hay Concrete Works	7	0	0	2	2	0	2	1.5	2	1	0	1	2	0	1.00	1	0	6.50	192	1 Burntwood		
SHLAA	315	Limburg Av., south west of, Lichfield	329	0	2	1	2	0	1	1	0	2	0	0	1	0	0.33	1	0	6.33	193	1 Lichfield	Farm track is nearest road access - see para 2.11 of the report. Doesn't affect accessibility results as no bus service at required time periods.	
SHLAA	397	Land at Cappers Lane, Whittington	234	0	2	1	2	0	1	1	1	1	0	0	1	0	0.33	1	0	6.33	193	Cast 5	Located on the edge of Whittington CAST 4 area therefore benefiting from there services and facilities.	
SHLAA	69	Lichfield Road, East of, Armitage with Handsacre	180	2	0	2	2	0	1	1.25	1	1	0	0	0	0	0.00	1	0	6.25	195	2 Armitage with Handsacre	Site under construction. Site allocated in local plan allocations'	
SHLAA	170	Land at Ogley Hay Road, Burntwood	157	2	0	0	2	0	1	0.75	0	1	2	0	1	0	0.33	0	0	6.08	196	1 Burntwood		
SHLAA	191	East of Pool Lane, North of Brownhills	202	0	0	0	1	1	1	0.75	1	1	2	0	1	0	0.33	1	0	6.08	196	1 Burntwood		
SHLAA	285	Kings Bromley Rd, The New Lodge, Alrewas	6	0	0	2	2	0	0	1	1	2	0	0	0	0	0.00	2	0	6.00	198	4 Alrewas		

Section of Sites	Reference	Name	Housing Yield	Is within 400m of a bus stop which is served by a frequency of 30 minutes or quicker (Mon-Fri) Yes or no (2 or 0)	'Is within 3km to a rail station' (Walk or cycle) Yes or no (2 or 0)	Are they within a 20 minute walk to a primary school within Staffordshire No access = 0 0-10 minutes = 2 10-20 minutes = 1	Are they within a 20 minute cycle to a primary school within Staffordshire No access = 0 0-10 minutes = 2 10-20 minutes = 1	Are they within a 20 minute walk to a secondary school within Staffordshire No access = 0 0-10 minutes = 2 10-20 minutes = 1	Are they within a 20 minute cycle to a secondary school within Staffordshire No access = 0 0-10 minutes = 2 10-20 minutes = 1	Average of 4 Education related calculations	'Are they within a 20 minute walk to a GP' No access = 0 0-10 minutes = 2 10-20 minutes = 1	'Can they access a Hospital within 60mins journey time using public transport' Wednesday 08:00-10:00 No access/60min + = 0 0-30 = 2 30-60 = 1	'Can they access a supermarket within 60mins journey time using public transport' Saturday 08:00-10:00 No access/60min + = 0 0-30 = 2 30-60 = 1	Are they within a 20 minute walk to a town/city centre? No access = 0 0-10 minutes = 2 10-20 minutes = 1	Are they within a 20 minute cycle to a town/city centre? No access = 0 0-10 minutes = 2 10-20 minutes = 1	Are they within 60 mins journey time using public transport to a town/city centre? Wednesday 08:00-09:00 No access = 0 0-30 minutes = 2 30-60 minutes = 1	Average of Town/City centre calculations	Are they within a 20 minute walk to a town/city centre OR Key Rural Centre OR Neighbourhood Centre OR a New Local Centre? No access = 0 0-10 minutes = 2 10-20 minutes = 1	Hansen score access to employment Wednesday 07:30-09:30 No access = 0 Score of 5-13962 = 1 Score of 13962+ = 2	Total Accessibility Score	Rank	CAST Settlement Area	Commentary
SHLAA	425	Broadfields, Jerrys Lane, Botany Bay	24	2	0	0	1	0	0	0.25	0	1	2	0	0	2	0.67	0	0	5.92	199	Cast 5	
SHLAA	274	Fisherwick Road, land adj 76	9	0	0	1	2	0	0	0.75	2	1	0	0	0	0	0.00	2	0	5.75	200	4 Whittington	
SHLAA	212	Alrewas Road, land rear 107, Kings Bromley	15	0	0	1	2	0	0	0.75	0	2	2	0	0	0	0.00	0	1	5.75	200	4 Kings Bromley	
SHLAA	312	Land r/o Mile Oak/Fazeley	380	2	0	1	2	0	1	1	0	2	0	0	1	0	0.33	0	0	5.33	206	2 Fazeley	
SHLAA	366	Land at Cartersfield Lane, Stonnall	41	0	0	1	2	0	0	0.75	2	1	2	0	0	0	0.00	0	0	5.75	200	Cast 5	CAST 5 location but has access to a GP surgery, bus service (60min+), Primary School, and is close to Walsall (employment)
SHLAA	297	A513, R/o Coton Green Centre, N of Tamworth	35	0	2	1	2	2	2	1.75	0	1	0	0	1	2	1.00	0	0	5.75	200	Cast 5	On the edge of CAST 1 settlement of Tamworth. Known capacity constraints on the highway network in North of Tamworth and limited sustainable transport options which are difficult to solve. Lack of local facilities available to serve location in this area.
SHLAA	302	Cheaster Rd., Land to East, Little Aston	107	2	0	0	1	0	0	0.25	0	1	2	0	0	1	0.33	0	0	5.58	205	Cast 5	Located next to CAST 2 Little Aston - along 6 bus route (Walsall to Sutton, every 30 mins)
2018	154	West of Fazeley	1000	2	0	1	2	0	1	1	0	2	0	0	1	0	0.33	0	0	5.33	206	Cast 5	Site is within 400m of a bus stop however, no access to GP, rail station or local centre.
SHLAA	130	Rugeley Road, land to the east of	149	0	0	1	2	0	1	1	1	0	2	0	1	0	0.33	1	0	5.33	206	1 Burntwood	Despite being located in CAST 1 Burntwood this site has limited access to services and facilities, as well as no public transport access.
SHLAA	218	Land at Little Aston Lane, Little Aston	50	0	2	1	2	0	0	0.75	0	1	0	0	0	0	0.00	2	0	5.75	200	2 Little Aston	No access to bus service, town/city centre or GP.
SHLAA	398	Park Lane, Bonehill House	30	0	2	1	2	0	1	1	1	0	0	0	1	0	0.33	1	0	5.33	206	2 Fazeley	Site is within 3km of a rail station and has some walk access to facilities' such as a local centre and GP. However, fails to score on bus related indicators
SHLAA	90	East of Birmingham Road, Shenstone Wood End	812	2	2	0	1	0	0	0.25	0	1	0	0	0	0	0.00	0	0	5.25	210	Cast 5	Site has access to X3 Bus Route, close to CAST 2 settlement Little Aston, and close to Blake Street rail station.
SHLAA	214	Knowle Lane, Roman Way, Lichfield	9	0	2	1	2	1	2	1.5	0	0	0	0	2	0	0.67	1	0	5.17	211	1 Lichfield	Site has access (10-20 min walk) to South of Lichfield 'new local centre', but has no bus route
SHLAA	403	Land at Little Curborough	75	0	2	0	2	0	1	0.75	0	0	0	0	1	0	0.33	2	0	5.08	212	1 Lichfield	Development site in Curborough. Not currently served by a bus service, with also no walking access to Primary school, GP or local centre.
SHLAA	27	Whitehorse Road, Land Off,	25	0	0	0	1	1	1	0.75	1	0	2	0	1	0	0.33	1	0	5.08	213	1 Burntwood	Site located close to M6 toll with no public transport services meaning there is no access to Hospitals, Supermarkets or employment.
SHLAA	217	White Horse Road, North of Brownhills	26	0	0	0	1	1	1	0.75	1	0	2	0	1	0	0.33	1	0	5.08	213	1 Burntwood	Site located close to M6 toll with no public transport services meaning there is no access to Hospitals, Supermarkets or employment.
SHLAA	246	Church Lane, land south of Hill Ridware	26	0	0	2	2	0	0	1	0	1	2	0	0	0	0.00	0	1	5.00	215	Cast 5	
SHLAA	424	Land east of Hill Ridware neighbourhood plan	33	0	0	2	2	0	0	1	0	1	2	0	0	0	0.00	0	1	5.00	215	Cast 5	

Section of Sites	Reference	Name	Housing Yield	Is within 400m of a bus stop which is served by a service with a frequency of 30 minutes or quicker (Mon-Fri) Yes or no (2 or 0)	'Is within 3km to a rail station' (Walk or cycle) Yes or no (2 or 0)	Are they within a 20 minute walk to a primary school within Staffordshire No access = 0 0-10 minutes = 2 10-20 minutes = 1	Are they within a 20 minute cycle to a primary school within Staffordshire No access = 0 0-10 minutes = 2 10-20 minutes = 1	Are they within a 20 minute walk to a secondary school within Staffordshire No access = 0 0-10 minutes = 2 10-20 minutes = 1	Are they within a 20 minute cycle to a secondary school within Staffordshire No access = 0 0-10 minutes = 2 10-20 minutes = 1	Average of 4 Education related calculations	'Are they within a 20 minute walk to a GP' No access = 0 0-10 minutes = 2 10-20 minutes = 1	'Can they access a Hospital within 60mins journey time using public transport' Wednesday 08:00-10:00 No access/60min + = 0 0-30 = 2 30-60 = 1	'Can they access a supermarket within 60mins journey time using public transport' Saturday 08:00-10:00 No access/60min + = 0 0-30 = 2 30-60 = 1	Are they within a 20 minute walk to a town/city centre? No access = 0 0-10 minutes = 2 10-20 minutes = 1	Are they within a 20 minute cycle to a town/city centre? No access = 0 0-10 minutes = 2 10-20 minutes = 1	Are they within 60 mins journey time using public transport to a town/city centre? Wednesday 08:00-09:00 No access = 0 0-30 minutes = 2 30-60 minutes = 1	Average of Town/City centre calculations	Are they within a 20 minute walk to a town/city centre OR Key Rural Centre OR Neighbourhood Centre OR a New Local Centre? No access = 0 0-10 minutes = 2 10-20 minutes = 1	Hansen score access to employment Wednesday 07:30-09:30 No access = 0 Score of 5-13962 = 1 Score of 13962+ = 2	Total Accessibility Score	Rank	CAST Settlement Area	Commentary
SHLAA	144	Tufton Cottage, Roman Road, Little Aston	8	0	2	1	2	0	0	0.75	0	1	0	0	0	0	0.00	1	0	4.75	217	2 Little Aston	Small site with poor public transport and local services such as GP and Primary school.
SHLAA	192	Alrewas Road, Land north, Kings Bromley	11	0	0	1	2	0	0	0.75	0	2	1	0	0	0	0.00	0	1	4.75	217	4 Kings Bromley	
SHLAA	120	Dunmore Hay Lane, Fradley	16	0	0	1	2	0	0	0.75	0	2	1	0	0	0	0.00	0	1	4.75	217	4 Fradley	
SHLAA	190	Ogreave Hall Lane, Orgreave Farm (West of Alrewas)	20	0	0	1	2	0	0	0.75	1	2	0	0	0	0	0.00	1	0	4.75	217	4 Alrewas	
SHLAA	122	Alrewas Road, Rear of 67-105, Kings Bromley	57	0	0	1	2	0	0	0.75	0	2	2	0	0	0	0.00	0	0	4.75	217	4 Kings Bromley	*: 19/01526/OUTM (Planning permission refused)*
SHLAA	223	Land adj Court Drive, Shenstone	104	0	2	1	2	0	0	0.75	1	0	0	0	0	0	0.00	1	0	4.75	217	3 Shenstone	
SHLAA	400	Land at Long Lane, Fradley	137	0	0	1	2	0	0	0.75	0	2	2	0	0	0	0.00	0	0	4.75	217	4 Fradley	
SHLAA	66	Fradley Lane, Land Off, Fradley	272	0	0	1	2	0	0	0.75	0	1	1	0	0	0	0.00	1	1	4.75	217	4 Fradley	
SHLAA	271	Footherley Lane, Footherley Hall	26	0	2	1	2	0	0	0.75	1	0	0	0	0	0	0.00	1	0	4.75	217	Cast 5	*Site under constructions. Site allocated in local plan allocations*
SHLAA	121	land off Chester Road, Stonnall (Plot 1)	450	0	0	1	2	0	0	0.75	1	1	2	0	0	0	0.00	0	0	4.75	217	Cast 5	CAST 5 location but has access to a GP surgery, bus service (60min+), Primary School, and is close to Walsall (employment)
SHLAA	201	Land off Coppy Nook Lane, Hammerwich (2)	9	0	0	1	2	0	2	1.25	1	1	0	0	1	0	0.33	1	0	4.58	227	1 Burntwood	Site located in CAST 1 Burntwood but located of smaller country road, with no PT service and no walk access facilities'.
SHLAA	56	Hospital Road, East of, Burntwood, Area 2	107	0	0	1	2	0	2	1.25	1	1	0	0	1	0	0.33	1	0	4.58	227	1 Burntwood	Site located in CAST 1 Burntwood but located of smaller country road, with no PT service and no walk access facilities'.
SHLAA	387	Syerscote Lane, Silver Birches	9	2	0	2	2	0	1	1.25	0	1	0	0	1	0	0.33	0	0	4.58	229	Cast 5	*Site with outline planning permission*
SHLAA	420	Land at Cartersfield Lane, Stonnall	322	0	0	0	1	0	1	0.5	1	1	2	0	0	0	0.00	0	0	4.50	230	Cast 5	
SHLAA	183	Land West of Shenstone	756	0	2	0	2	0	0	0.5	1	0	0	0	0	0	0.00	1	0	4.50	230	Cast 5	Located near to Shenstone and its services and rail station, though large site and not within 400m of a bus service
SHLAA	310	North East of Streethay Farm, Streethay	500	0	2	1	2	0	1	1	0	0	0	0	1	0	0.33	1	0	4.33	232	1 Lichfield	No bus service (access to Supermarket/Employment/Hospital therefore suffer), top of Streethay, new development - no GP. This falls part of the larger Curborough settlement but not under the control of IM properties
SHLAA	292	Rugeley Power Station	2300	0	2	2	2	2	2	2	0	0	0	0	1	0	0.33	0	0	4.33	233	1 Rugeley	This has planning permission. *Outline planning permission (see table B1). Site allocated in Local Plan Allocations.*
SHLAA	375	Burton Road, Streethay Farm	317	0	2	0	1	0	0	0.25	0	2	0	0	0	0	0.00	0	0	4.25	234	1 Lichfield	On the edge of Lichfield CAST 1 area, currently no bus service meaning scores are dropped for access to Hospitals, supermarkets and town/city centre access.

Section of Sites	Reference	Name	Housing Yield	Is within 400m of a bus stop which is served by a frequency of 30 minutes or quicker (Mon-Fri) Yes or no (2 or 0)	'Is within 3km to a rail station' (Walk or cycle) Yes or no (2 or 0)	Are they within a 20 minute walk to a primary school within Staffordshire -1	Are they within a 20 minute cycle to a primary school within Staffordshire -1	Are they within a 20 minute walk to a secondary school within Staffordshire -1	Are they within a 20 minute cycle to a secondary school within Staffordshire -1	Average of 4 Education related calculations	'Are they within a 20 minute walk to a GP' No access = 0 0-10 minutes = 2 10-20 minutes = 1	'Can they access a Hospital within 60mins journey time using public transport' Wednesday 08:00-10:00 No access/60min + = 0 0-30 = 2 30-60 = 1	'Can they access a supermarket within 60mins journey time using public transport' Saturday 08:00-10:00 No access/60min + = 0 0-30 = 2 30-60 = 1	Are they within a 20 minute walk to a town/city centre? No access = 0 0-10 minutes = 2 10-20 minutes = 1	Are they within a 20 minute cycle to a town/city centre? No access = 0 0-10 minutes = 2 10-20 minutes = 1	Are they within 60 mins journey time using public transport to a town/city centre? Wednesday 08:00-09:00 No access = 0 0-30 minutes = 2 30-60 minutes = 1	Average of Town/City centre calculations	Are they within a 20 minute walk to a town/city centre OR Key Rural Centre OR Neighbourhood Centre OR a New Local Centre? No access = 0 0-10 minutes = 2 10-20 minutes = 1	Hansen score access to employment Wednesday 07:30-09:30 No access = 0 Score of 5-13962 = 1 Score of 13962+ = 2	Total Accessibility Score	Rank	CAST Settlement Area	Commentary
SHLAA	277	London Road, land off, Lichfield	91	0	2	1	2	1	2	1.5	0	0	0	0	2	0	0.67	0	0	4.17	235	1 Lichfield	On Edge of CAST 1 Lichfield, but currently lacking bus services and facilities (Opposite Cricket Lane)
SHLAA	346	Meg Lane, Land north of, Burntwood	260	0	0	1	2	1	2	1.5	1	0	0	0	2	0	0.67	1	0	4.17	236	1 Burntwood	CAST 1 but site centroid point is close to Meg Lane, and the site is currently lacking bus services and is outside of a 20-minute walk to most facilities.
SHLAA	295	Lichfield Road, Land Off, Kings Bromley	64	0	0	2	2	0	0	1	0	2	1	0	0	0	0.00	0	0	4.00	237	4 Kings Bromley	
SHLAA	34	South of Church Lane, Fradley	363	0	0	2	2	0	0	1	0	2	0	0	0	0	0.00	1	0	4.00	237	4 Fradley	
SHLAA	276	Wade Lane, land south of	12	0	0	2	2	0	0	1	0	1	1	0	0	0	0.00	0	1	4.00	237	Cast 5	
SHLAA	348	Land north of Hill Ridwarre	115	0	0	2	2	0	0	1	0	1	2	0	0	0	0.00	0	0	4.00	237	Cast 5	
SHLAA	38	Wigginton Village Hall, Rear of, Main Road	10	0	2	2	2	0	2	1.5	0	0	0	0	1	0	0.33	0	0	3.83	241	Cast 5	Located just to the north of Tamworth. Known capacity constraints on the highway network in North of Tamworth and limited sustainable transport options which are difficult to solve. Lack of local facilities available to serve housing in this area.
SHLAA	82	Post Office Farm Syerscote Lane, Wigginton	17	0	2	2	2	0	2	1.5	0	0	0	0	1	0	0.33	0	0	3.83	241	Cast 5	Located just to the north of Tamworth. Known capacity constraints on the highway network in North of Tamworth and limited sustainable transport options which are difficult to solve. Lack of local facilities available to serve housing in this area.
SHLAA	182	Land rear of 82 Main Road, Wigginton	48	0	2	2	2	0	2	1.5	0	0	0	0	1	0	0.33	0	0	3.83	241	Cast 5	Located just to the north of Tamworth. Known capacity constraints on the highway network in North of Tamworth and limited sustainable transport options which are difficult to solve. Lack of local facilities available to serve housing in this area.
SHLAA	350	Land south of Alrewas Road, Kings Bromley	77	0	0	1	2	0	0	0.75	0	1	1	0	0	0	0.00	0	1	3.75	244	4 Kings Bromley	
SHLAA	314	Hay End Ln./Sale Ln., Fradley	405	0	0	1	2	0	0	0.75	0	2	0	0	0	0	0.00	1	0	3.75	244	4 Fradley	
SHLAA	2	Home Farm, Little Aston (land north of Little A)	700	0	2	1	2	0	0	0.75	0	0	0	0	0	0	0.00	1	0	3.75	244	2 Little Aston	Large site with centroid point in middle of field. Not within 400m of a bus stop, not within walking distance of facilities such as a local centre or GP.
SHLAA	390	Uttoxeter Road, land north of	67	0	0	1	2	0	0	0.75	0	1	2	0	0	0	0.00	0	0	3.75	244	Cast 5	
SHLAA	35	Land north of Meg Lane, Burntwood	66	0	0	1	2	0	2	1.25	1	0	0	0	1	0	0.33	1	0	3.58	248	1 Burntwood	CAST 1 but site centroid point is close to Meg Lane, and the site is currently lacking bus services and is outside of a 20-minute walk to most facilities.
SHLAA	181	Land north of Hollow Lane, Colton	38	0	2	2	2	0	1	1.25	0	0	0	0	1	0	0.33	0	0	3.58	248	Cast 5	
SHLAA	358	East of Birmingham Road, SE of Shenstone (2)	632	0	2	0	2	0	0	0.5	0	1	0	0	0	0	0.00	0	0	3.50	250	Cast 5	Access to X3 Bus Route, close to Shenstone and rail station
SHLAA	203	Land off Coppy Nook Lane, Hammerwich (4)	8	0	0	1	2	0	1	1	1	0	0	0	1	0	0.33	1	0	3.33	251	1 Burntwood	Site located in CAST 1 Burntwood but located of smaller country road, with no PT service and no walk access facilities'.
SHLAA	431	Land at Overton Lane, Hammerwich	9	0	0	1	2	0	1	1	1	0	0	0	1	0	0.33	1	0	3.33	251	1 Burntwood	Site located in CAST 1 Burntwood but located of smaller country road, with no PT service and no walk access facilities'.

Section of Sites	Reference	Name	Housing Yield	Is within 400m of a bus stop which is served by a frequency of 30 minutes or quicker (Mon-Fri) Yes or no (2 or 0)	'Is within 3km to a rail station' (Walk or cycle) Yes or no (2 or 0)	Are they within a 20 minute walk to a primary school within Staffordshire No access = 0 0-10 minutes = 2 10-20 minutes = 1	Are they within a 20 minute cycle to a primary school within Staffordshire No access = 0 0-10 minutes = 2 10-20 minutes = 1	Are they within a 20 minute walk to a secondary school within Staffordshire No access = 0 0-10 minutes = 2 10-20 minutes = 1	Are they within a 20 minute cycle to a secondary school within Staffordshire No access = 0 0-10 minutes = 2 10-20 minutes = 1	Average of 4 Education related calculations	'Are they within a 20 minute walk to a GP' No access = 0 0-10 minutes = 2 10-20 minutes = 1	'Can they access a Hospital within 60mins journey time using public transport' Wednesday 08:00-10:00 No access/60min + = 0 0-30 = 2 30-60 = 1	'Can they access a supermarket within 60mins journey time using public transport' Saturday 08:00-10:00 No access/60min + = 0 0-30 = 2 30-60 = 1	Are they within a 20 minute walk to a town/city centre? No access = 0 0-10 minutes = 2 10-20 minutes = 1	Are they within a 20 minute cycle to a town/city centre? No access = 0 0-10 minutes = 2 10-20 minutes = 1	Are they within 60 mins journey time using public transport to a town/city centre? Wednesday 08:00-09:00 No access = 0 0-30 minutes = 2 30-60 minutes = 1	Average of Town/ City centre calculations	Are they within a 20 minute walk to a town/city centre OR Key Rural Centre OR Neighbourhood Centre OR a New Local Centre? No access = 0 0-10 minutes = 2 10-20 minutes = 1	Hansen score access to employment Wednesday 07:30-09:30 No access = 0 Score of 5-13962 = 1 Score of 13962+ = 2	Total Accessibility Score	Rank	CAST Settlement Area	Commentary
SHLAA	200	Land off Coppy Nook Lane, Hammerwich (1)	12	0	0	1	2	0	1	1	1	0	0	0	1	0	0.33	1	0	3.33	251	1 Burntwood	Site located in CAST 1 Burntwood but located of smaller country road, with no PT service and no walk access facilities'.
SHLAA	401	Land off White Horse Road, Wharfside allotments,	12	0	0	0	1	1	2	1	1	0	0	0	1	0	0.33	1	0	3.33	251	1 Burntwood	Site located close to M6 toll with no public transport services meaning there is no access to Hospitals, Supermarkets or employment.
SHLAA	202	Land off Coppy Nook Lane, Hammerwich (3)	16	0	0	1	2	0	1	1	1	0	0	0	1	0	0.33	1	0	3.33	251	1 Burntwood	Site located in CAST 1 Burntwood but located of smaller country road, with no PT service and no walk access facilities'.
SHLAA	189	Bonehill Road, Florascape Ltd.	40	0	2	1	2	0	1	1	0	0	0	0	1	0	0.33	0	0	3.33	251	2 Fazeley	Site has poor connections to services and facilities such as a local centre, bus service and a GP.
SHLAA	399	Land at Rugeley Road, Burntwood	77	0	0	1	2	0	1	1	1	0	0	0	1	0	0.33	1	0	3.33	251	1 Burntwood	Despite being located in CAST 1 Burntwood this larger site has limited access to services and facilities, as well as no public transport access.
SHLAA	267	Coulter Lane, land east of, Burntwood	80	0	0	1	2	0	1	1	1	0	0	0	1	0	0.33	1	0	3.33	251	1 Burntwood	Sites located in the North-East of Burntwood CAST 1 area perform poorly due to the lack of public transport services. They are also not within a 20-min walk of the services and facilities. Burntwood also does not have a rail station.
SHLAA	172	Land west of Coulter Ln, Burntwood	400	0	0	1	2	0	1	1	1	0	0	0	1	0	0.33	1	0	3.33	251	1 Burntwood	Despite being located in CAST 1 Burntwood this larger site has limited access to services and facilities, as well as no public transport access.
SHLAA	406	Land west of Sutton Road (larger site), Mile Oak	713	0	0	1	2	0	1	1	0	2	0	0	1	0	0.33	0	0	3.33	251	2 Fazeley	Site has poor connections to services and facilities such as a local centre, bus service and a GP.
SHLAA	281	High Street, Rear of 31, Colton	10	0	2	1	2	0	1	1	0	0	0	0	1	0	0.33	0	0	3.33	251	Cast 5	
SHLAA	184	Hardwick Road, 36/Little Aston Park Road	11	0	2	0	1	0	0	0.25	0	1	0	0	0	0	0.00	0	0	3.25	262	2 Little Aston	Site in a field located at the back of houses, with limited connections to public transport. Also, no schools as close ones would be outside of Staffs.
SHLAA	254	Croxall Road, Spellow Field	15	0	0	0	1	0	0	0.25	0	2	0	0	0	0	0.00	0	1	3.25	262	4 Alrewas	
SHLAA	410	Burleigh Lodge, Sutton Road, Mile Oak	597	0	0	1	2	0	0	0.75	0	2	0	0	1	0	0.33	0	0	3.08	264	2 Fazeley	Similar to site 368 in Fazeley Located in CAST 2 Fazeley settlement, centroid point in middle of farm land. Currently outside the 400m buffer to the bus service 110 bus stops located off the A453
SHLAA	354	South of Blithbury Road, East of Colton (2)	238	0	2	0	2	0	1	0.75	0	0	0	0	1	0	0.33	0	0	3.08	264	Cast 5	
SHLAA	140	Land off Gorse Lane, Fradley Park	250	0	0	2	2	0	0	1	0	1	0	0	0	0	0.00	1	0	3.00	266	4 Fradley	*Site with resolution to grant outline planning permission subject to section 106 agreement (see table B1). Site allocated in local plan strategy*
SHLAA	225	Land South of Armitage with Handsacre	290	0	0	1	2	0	1	1	1	0	0	0	0	0	0.00	1	0	3.00	266	2 Armitage with Handsacre	
SHLAA	197	land south of Armitage	1105	0	0	1	2	0	1	1	1	1	0	0	0	0	0.00	0	0	3.00	266	2 Armitage with Handsacre	
SHLAA	157	Bleak House Farm, Burntwood	462	0	0	2	2	0	1	1.25	0	1	0	0	2	0	0.67	0	0	2.92	269	1 Burntwood	Located North-West of Burntwood close to Cannock Chase district. Sites have no walk access to local centre,GP or hospitals. Also have no bus service and rail station due to the location of the site.
SHLAA	355	South East of Blithbury Road, East of Colton (2)	227	0	2	0	1	0	1	0.5	0	0	0	0	1	0	0.33	0	0	2.83	270	Cast 5	

Section of Sites	Reference	Name	Housing Yield	Is within 400m of a bus stop which is served by a service with a frequency of 30 minutes or quicker (Mon-Fri) Yes or no (2 or 0)	'Is within 3km to a rail station' (Walk or cycle) Yes or no (2 or 0)	Are they within a 20 minute walk to a primary school within Staffordshire - No access = 0 0-10 minutes = 2 10-20 minutes = 1	Are they within a 20 minute cycle to a primary school within Staffordshire - No access = 0 0-10 minutes = 2 10-20 minutes = 1	Are they within a 20 minute walk to a secondary school within Staffordshire - No access = 0 0-10 minutes = 2 10-20 minutes = 1	Are they within a 20 minute cycle to a secondary school within Staffordshire - No access = 0 0-10 minutes = 2 10-20 minutes = 1	Average of 4 Education related calculations	'Are they within a 20 minute walk to a GP' No access = 0 0-10 minutes = 2 10-20 minutes = 1	'Can they access a Hospital within 60mins journey time using public transport' Wednesday 08:00-10:00 No access/60min + = 0 0-30 = 2 30-60 = 1	'Can they access a supermarket within 60mins journey time using public transport' Saturday 08:00-10:00 No access/60min + = 0 0-30 = 2 30-60 = 1	Are they within a 20 minute walk to a town/city centre? No access = 0 0-10 minutes = 2 10-20 minutes = 1	Are they within a 20 minute cycle to a town/city centre? No access = 0 0-10 minutes = 2 10-20 minutes = 1	Are they within 60 mins journey time using public transport to a town/city centre? Wednesday 08:00-09:00 No access = 0 0-30 minutes = 2 30-60 minutes = 1	Average of Town/City centre calculations	Are they within a 20 minute walk to a town/city centre OR Key Rural Centre OR Neighbourhood Centre OR a New Local Centre? No access = 0 0-10 minutes = 2 10-20 minutes = 1	Hansen score access to employment Wednesday 07:30-09:30 No access = 0 Score of 5-13962 = 1 Score of 13962+ = 2	Total Accessibility Score	Rank	CAST Settlement Area	Commentary
SHLAA	352	South East of Blithbury Road, East of Colton	286	0	2	0	1	0	1	0.5	0	0	0	0	1	0	0.33	0	0	2.83	270	Cast 5	
SHLAA	32	Land North East of Lichfield	2780	0	2	0	1	0	1	0.5	0	0	0	0	1	0	0.33	0	0	2.83	270	1 Lichfield	Large development site in Curborough. Not currently served by a bus service, with also no walking access to Primary school, GP or local centre.
SHLAA	344	Land west of Hammerliwch	194	0	0	0	1	0	1	0.5	1	0	0	0	1	0	0.33	1	0	2.83	273	1 Burntwood	Located in Hammerwich with no public transport access and no/limited connections to services and facilities in the hamlet.
SHLAA	204	Orchard Farm, Fradley	180	0	2	0	2	0	0	0.5	0	0	0	0	1	0	0.33	0	0	2.83	274	1 Lichfield	Site located on boundary of Lichfield CAST area on boarder of Fradley, with limited access to services and facilities' and no bus service.
SHLAA	125	Dunmore Hay Lane, Fradley (Site A)	12	0	0	1	2	0	0	0.75	0	1	1	0	0	0	0.00	0	0	2.75	275	4 Fradley	
SHLAA	215	Forge Lane, Forge Cottage, Little Aston	17	0	2	1	2	0	0	0.75	0	0	0	0	0	0	0.00	0	0	2.75	275	2 Little Aston	Site with centroid point in middle of field. Not within 400m of a bus stop, not within walking distance of facilities such as a local centre or GP.
SHLAA	269	Land south of Beech Gate	22	0	2	1	2	0	0	0.75	0	0	0	0	0	0	0.00	0	0	2.75	275	2 Little Aston	Located next to Little Aston Hospital, just over 400m distance to a bus service, therefore does not score well on bus related calculations.
SHLAA	259	Overlay Lane, land off	41	0	0	1	2	0	0	0.75	1	0	0	0	0	0	0.00	1	0	2.75	275	4 Fradley	
SHLAA	345	Land south of Kings Bromley	133	0	0	1	2	0	0	0.75	0	2	0	0	0	0	0.00	0	0	2.75	275	4 Kings Bromley	
SHLAA	320	Land at SSheepwash Farm	209	0	0	1	2	0	0	0.75	1	0	0	0	0	0	0.00	1	0	2.75	275	Cast 5	
SHLAA	272	Padbury Lane, land at	47	0	0	1	2	0	1	1	1	0	0	0	2	0	0.67	0	0	2.67	281	1 Burntwood	CAST 1 but site centroid point is close to rural roads, and the site is currently lacking bus services and is outside of a 20-minute walk to most facilities.
SHLAA	353	North of Blithbuty Road, East of Colton	299	0	2	0	1	0	0	0.25	0	0	0	0	1	0	0.33	0	0	2.58	282	Cast 5	
SHLAA	338	East of Wigginton	173	0	0	2	2	0	1	1.25	0	1	0	0	1	0	0.33	0	0	2.58	282	Cast 5	
SHLAA	369	Land west of Curborough Grange	5	0	0	0	1	0	0	0.25	0	0	0	0	1	0	0.33	2	0	2.58	284	4 Fradley	
SHLAA	299	Roman Lane, Adj., Barns Farm, Little Aston	49	0	2	0	2	0	0	0.5	0	0	0	0	0	0	0.00	0	0	2.50	285	2 Little Aston	Site in a field located at the back of houses, with limited connections to public transport. Also, no schools as close ones would be outside of Staffs.
SHLAA	8	Slade Farm, Bassets Pole Roundabout Land at,	259	0	0	0	0	0	0	0	0	2	0	0	1	0	0.33	0	0	2.33	286	Cast 5	
SHLAA	391	Green Barns Lane, Oak Farm	5	0	2	0	1	0	0	0.25	0	0	0	0	0	0	0.00	0	0	2.25	287	Cast 5	*Site with full planning permission*
SHLAA	407	Pacific Nurseries, Little Hay Lane	49	0	2	0	1	0	0	0.25	0	0	0	0	0	0	0.00	0	0	2.25	287	Cast 5	

Section of Sites	Reference	Name	Housing Yield	Is within 400m of a bus stop which is served by a frequency of 30 minutes or quicker (Mon-Fri) Yes or no (2 or 0)	'Is within 3km to a rail station' (Walk or cycle) Yes or no (2 or 0)	Are they within a 20 minute walk to a primary school within Staffordshire No access = 0 0-10 minutes = 2 10-20 minutes = 1	Are they within a 20 minute cycle to a primary school within Staffordshire No access = 0 0-10 minutes = 2 10-20 minutes = 1	Are they within a 20 minute walk to a secondary school within Staffordshire No access = 0 0-10 minutes = 2 10-20 minutes = 1	Are they within a 20 minute cycle to a secondary school within Staffordshire No access = 0 0-10 minutes = 2 10-20 minutes = 1	Average of 4 Education related calculations	'Are they within a 20 minute walk to a GP' No access = 0 0-10 minutes = 2 10-20 minutes = 1	'Can they access a Hospital within 60mins journey time using public transport' Wednesday 08:00-10:00 No access/60min + = 0 0-30 = 2 30-60 = 1	'Can they access a supermarket within 60mins journey time using public transport' Saturday 08:00-10:00 No access/60min + = 0 0-30 = 2 30-60 = 1	Are they within a 20 minute walk to a town/city centre? No access = 0 0-10 minutes = 2 10-20 minutes = 1	Are they within a 20 minute cycle to a town/city centre? No access = 0 0-10 minutes = 2 10-20 minutes = 1	Are they within 60 mins journey time using public transport to a town/city centre? Wednesday 08:00-09:00 No access = 0 0-30 minutes = 2 30-60 minutes = 1	Average of Town/City centre calculations	Are they within a 20 minute walk to a town/city centre OR Key Rural Centre OR Neighbourhood Centre OR a New Local Centre? No access = 0 0-10 minutes = 2 10-20 minutes = 1	Hansen score access to employment Wednesday 07:30-09:30 No access = 0 Score of 5-13962 = 1 Score of 13962+ = 2	Total Accessibility Score	Rank	CAST Settlement Area	Commentary
SHLAA	357	East of Fotherley Lane, South of Shenstone	317	0	2	0	1	0	0	0.25	0	0	0	0	0	0	0.00	0	0	2.25	287	Cast 5	
SHLAA	368	Land east of Sutton Road, Mile Oak	480	0	0	0	1	0	0	0.25	0	2	0	0	0	0	0.00	0	0	2.25	287	2 Fazeley	Edge of CAST 2 Fazeley border, centroid point in middle of farm land. Currently about 14m out of the 400m buffer to the bus service 110 bus stops located off the A453
SHLAA	187	St. Matthew's Road, land south of	72	0	0	0	2	0	1	0.75	1	0	0	1	0	0.33	0	0	2.08	291	1 Burntwood	Sites located in the North-East of Burntwood CAST 1 area perform poorly due to the lack of public transport services. They are also not within a 20-min walk of the services and facilities. Burntwood also does not have a rail station.	
SHLAA	417	land north of Main Street, Clifton Campville (2)	5	0	0	2	2	0	0	1	0	0	0	0	0	0.00	0	1	2.00	292	Cast 5		
SHLAA	321	Main St., land north of, Clifton Campville	36	0	0	2	2	0	0	1	0	0	0	0	0	0.00	0	1	2.00	292	Cast 5		
SHLAA	341	South of Clifton Campville	38	0	0	2	2	0	0	1	0	0	0	0	0	0.00	0	1	2.00	292	Cast 5		
SHLAA	336	Coppice Lane, South of Clifton Campville	46	0	0	2	2	0	0	1	0	0	0	0	0	0.00	0	1	2.00	292	Cast 5		
SHLAA	41	Land of School Lane, Edingale	126	0	0	2	2	0	0	1	0	0	0	0	0	0.00	0	1	2.00	292	Cast 5		
SHLAA	280	Ironstone Road, land west	120	0	0	1	2	0	2	1.25	0	0	0	0	2	0	0.67	0	0	1.92	297	1 Burntwood	Located North-West of Burntwood close to Cannock Chase district. Sites have no walk access to local centre, GP or hospitals. Also have no bus service and rail station due to the location of the site.
SHLAA	373	Land at Corporation Farm, Watery Lane	1330	0	0	0	1	0	1	0.5	0	0	0	0	1	0	0.33	1	0	1.83	298	Cast 5	
SHLAA	419	Land at New House Farm, Hal Lane, Hammerwich	73	0	0	0	1	0	1	0.5	1	0	0	0	1	0	0.33	0	0	1.83	298	1 Burntwood	Located in Hammerwich with no public transport access and no/limited connections to services and facilities in the hamlet.
SHLAA	84	Gilway, Land North of, Tamworth	619	0	0	1	2	1	2	1.5	0	0	0	0	1	0	0.33	0	0	1.83	298	Cast 5	On the edge of CAST 1 settlement or Tamworth. Known capacity constraints on the highway network in North of Tamworth and limited sustainable transport options which are difficult to solve. Lack of local facilities available to serve housing in this area.
SHLAA	126	Dunmore Hay Lane, Fradley (Site B)	44	0	0	1	2	0	0	0.75	0	1	0	0	0	0.00	0	0	1.75	301	4 Fradley		
SHLAA	54	The Homestead, Haunton Road, Harlaston	8	0	0	1	2	0	0	0.75	0	0	0	0	0	0.00	0	1	1.75	301	Cast 5		
SHLAA	258	Main Road, Haunton, land off (2)	15	0	0	1	2	0	0	0.75	0	0	0	0	0	0.00	0	1	1.75	301	Cast 5		
SHLAA	168	Land East of Burton Road, Elford	43	0	0	1	2	0	0	0.75	0	0	0	0	0	0.00	0	1	1.75	301	Cast 5		
SHLAA	167	Land at Manor Park, Kings Bromley	120	0	0	1	2	0	0	0.75	0	1	0	0	0	0.00	0	0	1.75	301	Cast 5		
SHLAA	328	Ironstone Road, land off, Burntwood	158	0	0	1	2	0	1	1	0	0	0	0	2	0	0.67	0	0	1.67	306	1 Burntwood	Located North-West of Burntwood close to Cannock Chase district. Sites have no walk access to local centre, GP or hospitals. Also have no bus service and rail station due to the location of the site.

Section of Sites	Reference	Name	Housing Yield	Is within 400m of a bus stop which is served by a frequency of 30 minutes or quicker (Mon-Fri) Yes or no (2 or 0)	'Is within 3km to a rail station' (Walk or cycle) Yes or no (2 or 0)	Are they within a 20 minute walk to a primary school within Staffordshire No access = 0 0-10 minutes = 2 10-20 minutes = 1	Are they within a 20 minute cycle to a primary school within Staffordshire No access = 0 0-10 minutes = 2 10-20 minutes = 1	Are they within a 20 minute walk to a secondary school within Staffordshire No access = 0 0-10 minutes = 2 10-20 minutes = 1	Are they within a 20 minute cycle to a secondary school within Staffordshire No access = 0 0-10 minutes = 2 10-20 minutes = 1	Average of 4 Education related calculations	'Are they within a 20 minute walk to a GP' No access = 0 0-10 minutes = 2 10-20 minutes = 1	'Can they access a Hospital within 60mins journey time using public transport' Wednesday 08:00-10:00 No access/60min + = 0 0-30 = 2 30-60 = 1	'Can they access a supermarket within 60mins journey time using public transport' Saturday 08:00-10:00 No access/60min + = 0 0-30 = 2 30-60 = 1	Are they within a 20 minute walk to a town/city centre? No access = 0 0-10 minutes = 2 10-20 minutes = 1	Are they within a 20 minute cycle to a town/city centre? No access = 0 0-10 minutes = 2 10-20 minutes = 1	Are they within 60 mins journey time using public transport to a town/city centre? Wednesday 08:00-09:00 No access = 0 0-30 minutes = 2 30-60 minutes = 1	Average of Town/City centre calculations	Are they within a 20 minute walk to a town/city centre OR Key Rural Centre OR Neighbourhood Centre OR a New Local Centre? No access = 0 0-10 minutes = 2 10-20 minutes = 1	Hansen score access to employment Wednesday 07:30-09:30 No access = 0 Score of 5-13962 = 1 Score of 13962+ = 2	Total Accessibility Score	Rank	CAST Settlement Area	Commentary
SHLAA	243	Salts Lane, land off, Drayton Bassett	21	0	0	2	2	0	1	1.25	0	0	0	0	1	0	0.33	0	0	1.58	307	Cast 5	
SHLAA	311	Salts Ln., drayton Ln., Land to N, Drayton Bassett	45	0	0	2	2	0	1	1.25	0	0	0	0	1	0	0.33	0	0	1.58	307	Cast 5	
SHLAA	282	Syerscote Lane, Corner of Main Street, Haunton	11	0	0	0	2	0	0	0.5	0	0	0	0	0	0	0.00	0	1	1.50	309	Cast 5	
SHLAA	376	Land north of Bonehill Road, Bonehill	750	0	0	1	2	0	1	1	0	0	0	0	1	0	0.33	0	0	1.33	310	2 Fazeley	Large site in Fazeley, centroid point is in middle of farmland field. Site is not within 400m of a bus service, or walking distance to services such as GPs or local centre.
SHLAA	343	South of Stockings Lane, Upper Longdon	8	0	0	1	2	0	1	1	0	0	0	0	1	0	0.33	0	0	1.33	310	Cast 5	
SHLAA	164	Land at Meerash Farm South of M6Toll, Hammerwich	14	0	0	0	2	0	2	1	0	0	0	0	1	0	0.33	0	0	1.33	310	Cast 5	
SHLAA	58	High Street, Colton	41	0	0	1	2	0	1	1	0	0	0	0	1	0	0.33	0	0	1.33	310	Cast 5	
SHLAA	283	Brereton Hill Lane, Land off, Upper Longdon	42	0	0	1	2	0	1	1	0	0	0	0	1	0	0.33	0	0	1.33	310	Cast 5	
SHLAA	39	Westwood School, Blithbury	41	0	0	0	1	0	0	0.25	0	1	0	0	0	0	0.00	0	0	1.25	315	Cast 5	
SHLAA	132	East of A38, Alrewas Quarry (Whitmoor GV)	1500	0	0	0	1	0	0	0.25	0	0	1	0	0	0	0.00	0	0	1.25	315	4 Alrewas	
SHLAA	413	Swan Paddock, Longdon	12	0	0	2	2	0	1	1.25	0	0	0	0	0	0	0.00	0	0	1.25	315	Cast 5	
SHLAA	263	AS1, land adjacent, Longdon	24	0	0	2	2	0	1	1.25	0	0	0	0	0	0	0.00	0	0	1.25	315	Cast 5	
SHLAA	207	land north of Longdon	81	0	0	2	2	0	1	1.25	0	0	0	0	0	0	0.00	0	0	1.25	315	Cast 5	
SHLAA	101	Lower Way, North of, Upper Longdon	24	0	0	0	2	0	1	0.75	0	0	0	0	1	0	0.33	0	0	1.08	320	Cast 5	
SHLAA	239	High Street 61, land rear of	33	0	0	1	2	0	0	0.75	0	0	0	0	1	0	0.33	0	0	1.08	320	Cast 5	
SHLAA	260	High Street, Colton, land east of	34	0	0	1	2	0	0	0.75	0	0	0	0	1	0	0.33	0	0	1.08	320	Cast 5	
SHLAA	389	Brereton Hill Lane, land west of	67	0	0	0	2	0	1	0.75	0	0	0	0	1	0	0.33	0	0	1.08	320	Cast 5	
SHLAA	55	Hanney Hay Road, North of, Burntwood, Area 1	1110	0	0	1	1	0	1	0.75	0	0	0	0	1	0	0.33	0	0	1.08	320	Cast 5	

Section of Sites	Reference	Name	Housing Yield	Is within 400m of a bus stop which is served by a service with a frequency of 30 minutes or quicker (Mon-Fri) Yes or no (2 or 0)	'Is within 3km to a rail station' (Walk or cycle) Yes or no (2 or 0)	Are they within a 20 minute walk to a primary school within Staffordshire	Are they within a 20 minute cycle to a primary school within Staffordshire	Are they within a 20 minute walk to a secondary school within Staffordshire	Are they within a 20 minute cycle to a secondary school within Staffordshire	Average of 4 Education related calculations	'Are they within a 20 minute walk to a GP' No access = 0 0-10 minutes = 2 10-20 minutes = 1	'Can they access a Hospital within 60mins journey time using public transport' Wednesday 08:00-10:00 No access/60min + = 0 0-30 = 2 30-60 = 1	'Can they access a supermarket within 60mins journey time using public transport' Saturday 08:00-10:00 No access/60min + = 0 0-30 = 2 30-60 = 1	Are they within a 20 minute walk to a town/city centre?' No access = 0 0-10 minutes = 2 10-20 minutes = 1	Are they within a 20 minute cycle to a town/city centre?' No access = 0 0-10 minutes = 2 10-20 minutes = 1	Are they within 60 mins journey time using public transport to a town/city centre?' Wednesday 08:00-09:00 No access = 0 0-30 minutes = 2 30-60 minutes = 1	Average of Town/City centre calculations	Are they within a 20 minute walk to a town/city centre OR Key Rural Centre OR Neighbourhood Centre OR a New Local Centre?' No access = 0 0-10 minutes = 2 10-20 minutes = 1	Hansen score access to employment Wednesday 07:30-09:30 No access = 0 Score of 5-13962 = 1 Score of 13962+ = 2	Total Accessibility Score	Rank	CAST Settlement Area	Commentary
SHLAA	169	St Matthew's Road, Burntwood	50	0	0	0	2	0	1	0.75	0	0	0	0	1	0	0.33	0	0	1.08	320	1 Burntwood	Sites located in the North-East of Burntwood CAST 1 area perform poorly due to the lack of public transport services. They are also not within a 20-min walk of the services and facilities. Burntwood also does not have a rail station.
SHLAA	317	Coulter Lane, land east of, Burntwood	180	0	0	0	2	0	1	0.75	0	0	0	0	1	0	0.33	0	0	1.08	320	1 Burntwood	Sites located in the North-East of Burntwood CAST 1 area perform poorly due to the lack of public transport services. They are also not within a 20-min walk of the services and facilities. Burntwood also does not have a rail station.
SHLAA	83	Lullington Road	10	0	0	2	2	0	0	1	0	0	0	0	0	0	0.00	0	0	1.00	327	Cast 5	
SHLAA	100	Land off Croft Close, Elfröd	10	0	0	2	2	0	0	1	0	0	0	0	0	0	0.00	0	0	1.00	327	Cast 5	
SHLAA	51	Land south of Lullington Road, Edingale (2)	13	0	0	2	2	0	0	1	0	0	0	0	0	0	0.00	0	0	1.00	327	Cast 5	
SHLAA	222	Land at Raddle Lane	27	0	0	2	2	0	0	1	0	0	0	0	0	0	0.00	0	0	1.00	327	Cast 5	
SHLAA	268	Hay Lane, Cricket Pitch, Longdon Green	34	0	0	1	2	0	1	1	0	0	0	0	0	0	0.00	0	0	1.00	327	Cast 5	
SHLAA	262	Drayton Lane, land south of, Drayton Bassett	68	0	0	2	2	0	0	1	0	0	0	0	0	0	0.00	0	0	1.00	327	Cast 5	
SHLAA	160	Rear of Church Way, Longdon	99	0	0	1	2	0	1	1	0	0	0	0	0	0	0.00	0	0	1.00	327	Cast 5	
SHLAA	318	Burton Rd., Greendales Farm, Elfröd	124	0	0	2	2	0	0	1	0	0	0	0	0	0	0.00	0	0	1.00	327	Cast 5	
SHLAA	124	Beech Walk, South and East of, Longdon	167	0	0	2	2	0	0	1	0	0	0	0	0	0	0.00	0	0	1.00	327	Cast 5	
SHLAA	145	Station Road, Land off, Hammerwich	5	0	0	0	1	0	1	0.5	0	0	0	0	1	0	0.33	0	0	0.83	336	Cast 5	
SHLAA	123	Land off Lower Way, Upper Longdon	8	0	0	0	1	0	1	0.5	0	0	0	0	1	0	0.33	0	0	0.83	336	Cast 5	
SHLAA	199	Land east of Shute Hill, Chorley	14	0	0	0	1	0	1	0.5	0	0	0	0	1	0	0.33	0	0	0.83	336	Cast 5	
SHLAA	290	Lodge Ln., Land off, Chorley	28	0	0	0	1	0	1	0.5	0	0	0	0	1	0	0.33	0	0	0.83	336	Cast 5	
SHLAA	165	Land South of Coppice Lane, Hammerwich	44	0	0	0	1	0	1	0.5	0	0	0	0	1	0	0.33	0	0	0.83	336	Cast 5	
SHLAA	163	Land off Meerash Farm, Hammerwich	232	0	0	0	1	0	1	0.5	0	0	0	0	1	0	0.33	0	0	0.83	336	Cast 5	
SHLAA	426	Netherstowe Lane, Curborough Bams	40	0	0	0	2	0	0	0.5	0	0	0	0	1	0	0.33	0	0	0.83	336	4 Fradley	

Section of Sites	Reference	Name	Housing Yield	Is within 400m of a bus stop which is served by a frequency of 30 minutes or quicker (Mon-Fri) Yes or no (2 or 0)	'Is within 3km to a rail station' (Walk or cycle) Yes or no (2 or 0)	Are they within a 20 minute walk to a primary school within Staffordshire No access = 0 0-10 minutes = 2 10-20 minutes = 1	Are they within a 20 minute cycle to a primary school within Staffordshire No access = 0 0-10 minutes = 2 10-20 minutes = 1	Are they within a 20 minute walk to a secondary school within Staffordshire No access = 0 0-10 minutes = 2 10-20 minutes = 1	Are they within a 20 minute cycle to a secondary school within Staffordshire No access = 0 0-10 minutes = 2 10-20 minutes = 1	Average of 4 Education related calculations	'Are they within a 20 minute walk to a GP' No access = 0 0-10 minutes = 2 10-20 minutes = 1	'Can they access a Hospital within 60mins journey time using public transport' Wednesday 08:00-10:00 No access/60min + = 0 0-30 = 2 30-60 = 1	'Can they access a supermarket within 60mins journey time using public transport' Saturday 08:00-10:00 No access/60min + = 0 0-30 = 2 30-60 = 1	Are they within a 20 minute walk to a town/city centre? No access = 0 0-10 minutes = 2 10-20 minutes = 1	Are they within a 20 minute cycle to a town/city centre? No access = 0 0-10 minutes = 2 10-20 minutes = 1	Are they within 60 mins journey time using public transport to a town/city centre? Wednesday 08:00-09:00 No access = 0 0-30 minutes = 2 30-60 minutes = 1	Average of Town/City centre calculations	Are they within a 20 minute walk to a town/city centre OR Key Rural Centre OR Neighbourhood Centre OR a New Local Centre? No access = 0 0-10 minutes = 2 10-20 minutes = 1	Hansen score access to employment Wednesday 07:30-09:30 No access = 0 Score of 5-13962 = 1 Score of 13962+ = 2	Total Accessibility Score	Rank	CAST Settlement Area	Commentary
SHLAA	257	Main Road, Haunton, land off	17	0	0	1	2	0	0	0.75	0	0	0	0	0	0	0.00	0	0	0.75	343	Cast 5	
SHLAA	31	Lullington Road, Edingale	37	0	0	1	2	0	0	0.75	0	0	0	0	0	0	0.00	0	0	0.75	343	Cast 5	
SHLAA	40	Land north of Lullington Road, Edingale	43	0	0	1	2	0	0	0.75	0	0	0	0	0	0	0.00	0	0	0.75	343	Cast 5	
SHLAA	416	Land at Copple Lane, Clifton Campville	70	0	0	1	2	0	0	0.75	0	0	0	0	0	0	0.00	0	0	0.75	343	Cast 5	
SHLAA	62	Sale Lane, CEMEX Site 3	90	0	0	1	2	0	0	0.75	0	0	0	0	0	0	0.00	0	0	0.75	343	4 Fradley	
SHLAA	383	Dunstall Far, east of A38	333	0	0	1	2	0	0	0.75	0	0	0	0	0	0	0.00	0	0	0.75	343	4 Fradley	
SHLAA	415	Plantation Lane, Hopwas House Farm	700	0	0	1	1	0	1	0.75	0	0	0	0	0	0	0.00	0	0	0.75	343	2 Hopwas	Large site in Hopwas, centroid point is in middle of farmland field. Site is not within 400m of a bus service, or walking distance to services such as GPs or local centre.
SHLAA	331	Land north of Little Aston (wider site)	5634	0	0	1	2	0	0	0.75	0	0	0	0	0	0	0.00	0	0	0.75	343	2 Little Aston	Large site with centroid point in middle of field. Not within 400m of a bus stop, not within walking distance of facilities such as a local centre or GP.
SHLAA	359	East of Pessall Lane	31	0	0	0	2	0	0	0.5	0	0	0	0	0	0	0.00	0	0	0.50	351	Cast 5	
SHLAA	303	Chester Rd., Field Adj 20, Stonnall	108	0	0	0	2	0	0	0.5	0	0	0	0	0	0	0.00	0	0	0.50	351	Cast 5	
SHLAA	264	Land north of Main Road, Harlaston	160	0	0	1	1	0	0	0.5	0	0	0	0	0	0	0.00	0	0	0.50	351	Cast 5	
SHLAA	60	A513, Alrewas, CEMEX Site 1	404	0	0	0	2	0	0	0.5	0	0	0	0	0	0	0.00	0	0	0.50	351	4 Fradley	
SHLAA	241	Land east of A38 (Brookhay)	4259	0	0	0	2	0	0	0.5	0	0	0	0	0	0	0.00	0	0	0.50	351	4 Fradley	
SHLAA	88	North of Slade Road, Bassetts Pole	63	0	0	0	0	0	0	0	0	0	0	0	1	0	0.33	0	0	0.33	356	Cast 5	
SHLAA	334	Drayton Lane., Cranebrook, Drayton Bassett	5	0	0	0	1	0	0	0.25	0	0	0	0	0	0	0.00	0	0	0.25	357	Cast 5	
SHLAA	362	Lea Lane, Lea Hall Farmhouse	5	0	0	0	1	0	0	0.25	0	0	0	0	0	0	0.00	0	0	0.25	357	Cast 5	*Site with full planning permission*
SHLAA	378	Tamworth Road, New Buildings Farm	5	0	0	0	1	0	0	0.25	0	0	0	0	0	0	0.00	0	0	0.25	357	Cast 5	
SHLAA	411	Bilthbury Road, Hamstall Hall Farm	8	0	0	0	1	0	0	0.25	0	0	0	0	0	0	0.00	0	0	0.25	357	Cast 5	

Section of Sites	Reference	Name	Housing Yield	Is within 400m of a bus stop which is served by a frequency of 30 minutes or quicker (Mon-Fri) Yes or no (2 or 0)	'Is within 3km to a rail station' (Walk or cycle) Yes or no (2 or 0)	Are they within a 20 minute walk to a primary school within Staffordshire No access = 0 0-10 minutes = 2 10-20 minutes = 1	Are they within a 20 minute cycle to a primary school within Staffordshire No access = 0 0-10 minutes = 2 10-20 minutes = 1	Are they within a 20 minute walk to a secondary school within Staffordshire No access = 0 0-10 minutes = 2 10-20 minutes = 1	Are they within a 20 minute cycle to a secondary school within Staffordshire No access = 0 0-10 minutes = 2 10-20 minutes = 1	Average of 4 Education related calculations	'Are they within a 20 minute walk to a GP' No access = 0 0-10 minutes = 2 10-20 minutes = 1	'Can they access a Hospital within 60mins journey time using public transport' Wednesday 08:00-10:00 Saturday 08:00-10:00 No access/60min + = 0 0-30 = 2 30-60 = 1	'Can they access a supermarket within 60mins journey time using public transport' Saturday 08:00-10:00 No access/60min + = 0 0-30 = 2 30-60 = 1	Are they within a 20 minute walk to a town/city centre? No access = 0 0-10 minutes = 2 10-20 minutes = 1	Are they within a 20 minute cycle to a town/city centre? No access = 0 0-10 minutes = 2 10-20 minutes = 1	Are they within 60 mins journey time using public transport to a town/city centre? Wednesday 08:00-09:00 No access = 0 0-30 minutes = 2 30-60 minutes = 1	Average of Town/City centre calculations	Are they within a 20 minute walk to a town/city centre OR Key Rural Centre OR Neighbourhood Centre OR a New Local Centre? No access = 0 0-10 minutes = 2 10-20 minutes = 1	Hansen score access to employment Wednesday 07:30-09:30 No access = 0 Score of 5-13962 = 1 Score of 13962+ = 2	Total Accessibility Score	Rank	CAST Settlement Area	Commentary
SHLAA	206	Land at Hungry Lane, Weeford	9	0	0	0	1	0	0	0.25	0	0	0	0	0	0	0.00	0	0	0.25	357	Cast 5	
SHLAA	265	Land north of Hungry Lane, Weeford	10	0	0	0	1	0	0	0.25	0	0	0	0	0	0	0.00	0	0	0.25	357	Cast 5	
SHLAA	209	Land west of Dog Lane, Weeford	18	0	0	0	1	0	0	0.25	0	0	0	0	0	0	0.00	0	0	0.25	357	Cast 5	
SHLAA	20	Main Road, land east of, Harlaston	32	0	0	0	1	0	0	0.25	0	0	0	0	0	0	0.00	0	0	0.25	357	Cast 5	
SHLAA	52	Church Farm, Harlaston	38	0	0	0	1	0	0	0.25	0	0	0	0	0	0	0.00	0	0	0.25	357	Cast 5	
SHLAA	75	South of Cranebrook Hill, Bassetts pole	86	0	0	0	1	0	0	0.25	0	0	0	0	0	0	0.00	0	0	0.25	357	Cast 5	
SHLAA	76	North of Shirrall Drive, Bassetts Pole	119	0	0	0	1	0	0	0.25	0	0	0	0	0	0	0.00	0	0	0.25	357	Cast 5	
SHLAA	409	Land at Watling Street.	218	0	0	0	1	0	0	0.25	0	0	0	0	0	0	0.00	0	0	0.25	357	Cast 5	
SHLAA	360	East of Pessall Lane (2)	241	0	0	0	1	0	0	0.25	0	0	0	0	0	0	0.00	0	0	0.25	357	Cast 5	
SHLAA	240	Lyalvale Express, Fisherwick	250	0	0	0	1	0	0	0.25	0	0	0	0	0	0	0.00	0	0	0.25	357	Cast 5	
SHLAA	307	West of Pessall Lane	325	0	0	0	1	0	0	0.25	0	0	0	0	0	0	0.00	0	0	0.25	357	Cast 5	
SHLAA	300	West of Pessall Lane (2)	342	0	0	0	1	0	0	0.25	0	0	0	0	0	0	0.00	0	0	0.25	357	Cast 5	
SHLAA	236	Rowley Farm Estate, Rowley Park (3)	349	0	0	0	1	0	0	0.25	0	0	0	0	0	0	0.00	0	0	0.25	357	Cast 5	
SHLAA	19	Little Hay Lane, North of (Whole site)	491	0	0	0	1	0	0	0.25	0	0	0	0	0	0	0.00	0	0	0.25	357	Cast 5	
SHLAA	351	South of Blithbury Road, East of Colton	767	0	0	0	1	0	0	0.25	0	0	0	0	0	0	0.00	0	0	0.25	357	Cast 5	
SHLAA	228	Rowley Farm Estate, Rowley Park (2)	806	0	0	0	1	0	0	0.25	0	0	0	0	0	0	0.00	0	0	0.25	357	Cast 5	
SHLAA	224	Rowley Farm Estate, Rowley Park (1)	886	0	0	0	1	0	0	0.25	0	0	0	0	0	0	0.00	0	0	0.25	357	Cast 5	
SHLAA	63	Weeford Park, CEMEX Site	2097	0	0	0	1	0	0	0.25	0	0	0	0	0	0	0.00	0	0	0.25	357	Cast 5	

Section of Sites	Reference	Name	Housing Yield	Is within 400m of a bus stop which is served by a frequency of 30 minutes or quicker (Mon-Fri) Yes or no (2 or 0)	'Is within 3km to a rail station' (Walk or cycle) Yes or no (2 or 0)	Are they within a 20 minute walk to a primary school within Staffordshire No access = 0 0-10 minutes = 2 10-20 minutes = 1	Are they within a 20 minute cycle to a primary school within Staffordshire No access = 0 0-10 minutes = 2 10-20 minutes = 1	Are they within a 20 minute walk to a secondary school within Staffordshire No access = 0 0-10 minutes = 2 10-20 minutes = 1	Are they within a 20 minute cycle to a secondary school within Staffordshire No access = 0 0-10 minutes = 2 10-20 minutes = 1	Average of 4 Education related calculations	'Are they within a 20 minute walk to a GP' No access = 0 0-10 minutes = 2 10-20 minutes = 1	'Can they access a Hospital within 60mins journey time using public transport' Wednesday 08:00-10:00 No access/60min + = 0 0-30 = 2 30-60 = 1	'Can they access a supermarket within 60mins journey time using public transport' Saturday 08:00-10:00 No access/60min + = 0 0-30 = 2 30-60 = 1	Are they within a 20 minute walk to a town/city centre? No access = 0 0-10 minutes = 2 10-20 minutes = 1	Are they within a 20 minute cycle to a town/city centre? No access = 0 0-10 minutes = 2 10-20 minutes = 1	Are they within 60 mins journey time using public transport to a town/city centre? Wednesday 08:00-09:00 No access = 0 0-30 minutes = 2 30-60 minutes = 1	Average of Town/City centre calculations	Are they within a 20 minute walk to a town/city centre OR Key Rural Centre OR Neighbourhood Centre OR a New Local Centre? No access = 0 0-10 minutes = 2 10-20 minutes = 1	Hansen score access to employment Wednesday 07:30-09:30 No access = 0 Score of 5-13962 = 1 Score of 13962+ = 2	Total Accessibility Score	Rank	CAST Settlement Area	Commentary
SHLAA	250	Fradley West	250	0	0	0	1	0	0	0.25	0	0	0	0	0	0	0.00	0	0	0.25	357	4 Fradley	
SHLAA	128	Little Aston, South of golf course	315	0	0	0	1	0	0	0.25	0	0	0	0	0	0	0.00	0	0	0.25	357	2 Little Aston	Site in a field located at the back of houses, with no connections to public transport. Also, no schools as close ones would be outside of Staffs.
SHLAA	221	South West of Plantation Lane	778	0	0	0	1	0	0	0.25	0	0	0	0	0	0	0.00	0	0	0.25	357	2 Hopwas	Large site in Hopwas, centroid point is in middle of farmland field. Site is not within 400m of a bus service, or walking distance to services such as GPs or local centre.
SHLAA	61	South west of London Road, near Bassetts Pole	17	0	0	0	0	0	0	0	0	0	0	0	0	0	0.00	0	0	0.00	382	Cast 5	
SHLAA	102	South of Canwell Estate	58	0	0	0	0	0	0	0	0	0	0	0	0	0	0.00	0	0	0.00	382	Cast 5	
SHLAA	220	South of Drayton Lane	402	0	0	0	0	0	0	0	0	0	0	0	0	0	0.00	0	0	0.00	382	Cast 5	
SHLAA	301	Land at Thorpe Constantine	4500	0	0	0	0	0	0	0	0	0	0	0	0	0	0.00	0	0	0.00	382	Cast 5	

Notes

1. In the 'Commentary' column those sites which have some form of planning consent or are under construction have been noted. This information was taken from the 2024 SHLAA report.
2. Some comments have been provided in the 'Commentary' column where sites in lower CAST type settlements have scored better than may have been expected, or where sites in higher CAST type settlements have scored lower than may be expected. Paragraph 3.8 of this report also provides some additional commentary. Please note that not all sites have been commented on, but further investigation can be undertaken if requested.